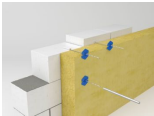


NDW Setting tool



Product information

Features and benefits

- Fast and simple anchoring KWB
- Reduces assembly time
- High-quality steel guarantees great durability

Product information

Product Code	Type of anchor	Width
		a1
		[mm]
NDW-300	KWB	42

Product commercial data

Product Code	Diameter [mm]	Length [mm]		Quantity [pcs]			Weight [kg]			Bar Codes
				Box	Outer	Pallet	Box	Outer	Pallet	
KWB-4/160	4	135	35	500	500	72500	3.2	3.2	494.0	5906675232423
KWB-4/180	4	155	35	500	500	72500	7.5	7.5	1114.3	5906675232522
KWB-4/210	4	185	35	500	500	50000	9.0	9.0	932.8	5906675232621
KWB-4/250	4	225	35	500	500	50000	10.6	10.6	1093.8	5906675232720
KWB-4/275	4	250	35	500	500	47500	12.1	12.1	1176.5	5906675232829
KWB-4/300	4	275	35	500	500	47500	13.0	13.0	1265.4	5906675232928
KWB-4/350	4	325	35	250	250	25000	7.8	7.8	805.7	5906675242026
KWB-4/400	4	375	35	250	250	20000	9.1	9.1	758.8	5906675242224