

R-RPC-0500 Universal foam cleaning agent

Universal cleaner for cleaning guns, removing uncured foams and adhesives.

Product information



Applications

- Removal of uncured PU foam and polyurethane adhesives
- Cleaning valves cans and guns after the application of PU foam
- Cleanup substrates before application of PU foam

Features and benefits

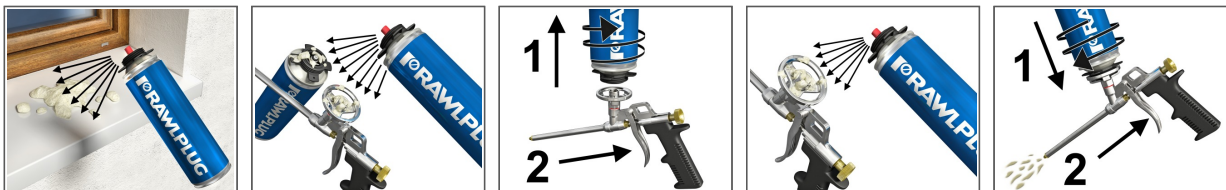
- Dissolves uncured polyurethane completely.
- Perfectly degrease work surfaces (steel, glass, wood) before application of polyurethane or silicone
- Safe for the surface of PVC and most plastics
- Application from +5°C up to +35°C
- The term of validity 36 months

Base materials

Approved for use in:

- Concrete
- Concrete Slab
- Solid Concrete Block
- Gypsum Fibreboards
- Aerated Concrete Block
- Hollow Lightweight Concrete Block
- Lightweight Concrete Block
- Ceramic Hollow Block
- Wood
- Chipboard
- Plasterboard
- High-Density Natural Stone
- Masonry
- Solid Brick
- Silicate Blocks
- Solid Sand-lime Brick
- Hollow Brick
- Hollow Sand-lime Brick

Installation guide



1. Surface Cleaning:

- Apply to the valve of the product enclosed spray tip
- Spray the fresh dirt
- When cleaning valve on the can of PU foam thoroughly spray the valve and the gun's adapter
- Remove dirt with a dry cloth

2. Gun Cleaning:

- Disconnect the gun from the can with PU foam. Remaining foam inside the gun remove by pressing the trigger of the gun
- Apply to the valve of the product enclosed spray tip
- Spray basket of gun using PU Foam Cleaner
- Remove the spray tip from the valve and connect the can - screwing it into the basket of the gun
- Press the trigger several times until the gun is completely cleaned
- Thoroughly dry all cleaned surfaces

Product information

Product Code	Colour	Basis weight	Range of temperatures for application
	-	[g]	[°C]
R-RPC-0500	colourless	0.78	5-35

Product commercial data

Product Code	Basis weight [g]	Quantity [pcs]			Weight [kg]			Bar Codes
		Box	Outer	Pallet	Box	Outer	Pallet	
R-RPC-0500	0.78	12	12	672	5.8	5.8	353.5	5906675388199