

CS Construction screws for wood with washer head

High reliability hardened screws for timber constructions



Product information

Features and benefits

- Easy to screw-in
- The partial thread on the shaft of the screw allows multiple elements to be clamped together securely without separation
- Notched thread and wax coating for reduced friction
- Crack avoidance
- Power and battery saving application
- Yellow or white zinc plated version
- TX drive guarantees secure transmission of screw-in torque and no pop-out of the bit
- Wide washer head for better pull-through resistance

Applications

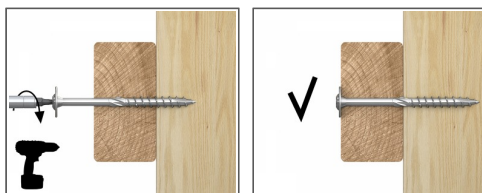
- Fastening timber and wood construction elements
- Rafter fastening to the purlins
- Fastening chipboards to wooden elements
- General wood joints
- Pergolas, bowers, sheds

Base materials

Approved for use in:

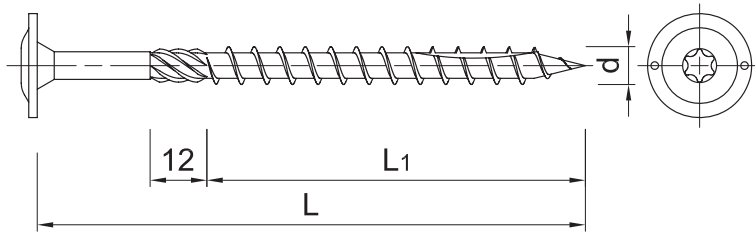
- Wood
- Timber

Installation guide



1. Choose the right length of the screw
2. Drive the screw straight until the head is flush
3. Screws with partial thread can clamp wooden parts avoiding spaces between them
4. Screws with countersunk head allow flush connection
5. Washer head effects on high pull-through resistance

Product information



Size	Product Code	Screw			Screw drive
		Diameter	Length		
		d [mm]	L [mm]	L1 [mm]	-
6,0	CS-6080	6	80	50	T30
	CS-6100	6	100	50	T30
	CS-6120	6	120	75	T30
	CS-6140	6	140	75	T30
	CS-6160	6	160	75	T30
8,0	CS-8080	8	80	52	T40
	CS-8100	8	100	52	T40
	CS-8120	8	120	80	T40
	CS-8140	8	140	80	T40
	CS-8160	8	160	80	T40
	CS-8180	8	180	80	T40
	CS-8200	8	200	80	T40
	CS-8220	8	220	80	T40
	CS-8240	8	240	80	T40
	CS-8260	8	260	80	T40
	CS-8280	8	280	80	T40
	CS-8300	8	300	80	T40
	CS-8320	8	320	80	T40
	CS-8340	8	340	80	T40
	CS-8360	8	360	80	T40
	CS-8380	8	380	80	T40
	CS-8400	8	400	80	T40
	CSK-80080-WH	8	80	52	T40
	CSK-80100-WH	8	100	52	T40
	CSK-80120-WH	8	120	80	T40
	CSK-80140-WH	8	140	80	T40
	CSK-80160-WH	8	160	80	T40
	CSK-80180-WH	8	180	80	T40
	CSK-80200-WH	8	200	80	T40
CSK-80220-WH	8	220	80	T40	
CSK-80260-WH	8	260	80	T40	
CSK-80300-WH	8	300	80	T40	
6,0	CS-6180	6	180	75	T30
	CS-6220	6	220	75	T30

Installation data

Size			Ø6	Ø8
Substrate			Timber	Timber
Min. installation depth	h_{nom}	[mm]	24	32
Min. substrate thickness	h_{min}	[mm]	48	64
Min. spacing	s_{min}	[mm]	30	30
Min. edge distance	c_{min}	[mm]	30	30
Screw drive	-		T30	T40

Basic performance data

Performance data for single anchor without influence of edge distance and spacing

Size			Ø6	Ø8
Characteristic yield moment	$M_{y,k}$	[Nmm]	1244	28080
Characteristic pull-out strength (perpendicular to grain)	$f_{ax,k}$	[N/mm ²]	11.59	16.82
Characteristic pull-out strength (parallel to grain)	$f_{ax,k}$	[N/mm ²]	6.71	9.9
Characteristic head pull-through strength	$f_{head,k}$	[N/mm ²]	16.74	23.65
Characteristic tensile strength	$f_{tens,k}$	[kN]	9.59	17.49
Characteristic torsional strength	$f_{tor,k}$	[Nm]	9.65	29.94
Characteristic ratio of moments (the ratio of torque and characteristic resistance)	$f_{tor,k} / R_{tor,k}$	[-]	2.21	4.31

Product commercial data

Product Code	Screw		Quantity [pcs]			Weight [kg]			Bar Codes
	Length [mm]		Box	Outer	Pallet	Box	Outer	Pallet	
CS-6080	80	50	100.0	1200.0	38400.0	1.10	13.2	452.4	5906675466521
CS-6100	100	50	100.0	1200.0	28800.0	1.33	16.0	413.0	5906675485171
CS-6120	120	75	100.0	1200.0	38400.0	1.56	18.7	629.0	5906675485188
CS-6140	140	75	100.0	1200.0	28800.0	1.79	21.5	545.5	5906675485195
CS-6160	160	75	100.0	1200.0	38400.0	2.0	24.2	805.7	5906675485201
CS-6180	180	75	100.0	800.0	25600.0	2.1	16.6	559.9	5906675513751
CS-6220	220	75	100.0	800.0	25600.0	2.5	20.3	680.2	5906675513768
CS-8080	80	52	50.0	600.0	14400.0	1.16	13.9	363.7	5906675454641
CS-8100	100	52	50.0	600.0	14400.0	1.38	16.6	427.2	5906675454658
CS-8120	120	80	50.0	600.0	14400.0	1.58	19.0	485.1	5906675454665
CS-8140	140	80	50.0	600.0	14400.0	1.79	21.5	546.7	5906675454672
CS-8160	160	80	50.0	600.0	14400.0	2.0	24.2	609.7	5906675454689
CS-8180	180	80	50.0	400.0	9600.0	2.3	18.1	463.6	5906675454696
CS-8200	200	80	50.0	400.0	9600.0	2.3	18.5	474.5	5906675454702
CS-8220	220	80	50.0	400.0	9600.0	2.6	20.9	531.8	5906675454719
CS-8240	240	80	50.0	400.0	9600.0	2.8	22.4	566.4	5906675454726
CS-8260	260	80	50.0	400.0	9600.0	2.9	23.4	590.7	5906675454733
CS-8280	280	80	50.0	200.0	6400.0	3.2	12.9	443.2	5906675454740
CS-8300	300	80	50.0	50.0	6400.0	3.4	3.4	469.3	5906675454757
CS-8320	320	80	50.0	50.0	6400.0	3.7	3.7	509.0	5906675454764
CS-8340	340	80	25.0	25.0	3200.0	2.1	2.1	296.0	5906675454771
CS-8360	360	80	25.0	25.0	3200.0	2.2	2.2	310.3	5906675454788
CS-8380	380	80	25.0	25.0	4550.0	2.2	2.2	438.2	5906675454795
CS-8400	400	80	25.0	25.0	4550.0	2.4	2.4	457.9	5906675454801
CSK-80080-WH	80	52	-	-	-	3.5	3.5	366.0	5906675485256
CSK-80100-WH	100	52	-	-	-	3.5	3.5	366.0	5906675485263
CSK-80120-WH	120	80	-	-	-	3.5	3.5	156.0	5906675447223
CSK-80140-WH	140	80	-	-	-	3.5	21.0	366.0	5906675485270
CSK-80160-WH	160	80	-	-	-	3.5	3.5	366.0	5906675485287
CSK-80180-WH	180	80	-	-	-	3.5	3.5	156.0	5906675447230
CSK-80200-WH	200	80	-	-	-	3.5	3.5	156.0	5906675447247
CSK-80220-WH	220	80	-	-	-	3.5	3.5	156.0	5906675448015
CSK-80260-WH	260	80	-	-	-	5.0	5.0	210.0	5906675447254
CSK-80300-WH	300	80	-	-	-	5.0	5.0	350.0	5906675485294