

T-LUS S-SHAPED CHAIN HOOK

S-Shaped quick link for connecting of chains and ropes



Product information

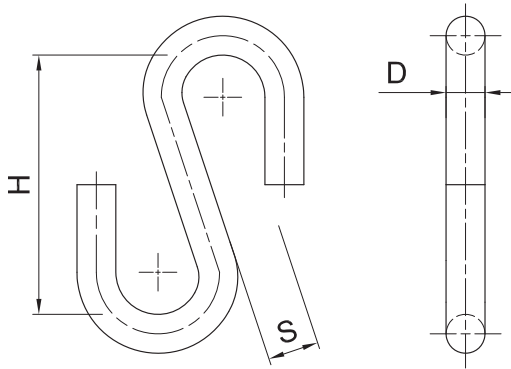
Features and benefits

- Quick and convenient way to connect segments of the chain
- Hot galvanized for enhanced corrosion resistance
- Open ends to make it easier to unhook and hook the chain onto the posts if required
- Made of low carbon steel

Applications

- Connecting of chains and ropes
- Setting up anchors and fixing grips
- Versatile utility hooks

Product information



Product Code	Dimensions		
	D	H	S
	[mm]	[mm]	[mm]
T-LUS-03	3	24	4
T-LUS-04	4	35	9
T-LUS-05	5	40	8
T-LUS-06	6	48	9

Basic performance data

Product Code	Load resistance	
	Maximum	
	[kg]	
T-LUS-03	40.00	
T-LUS-04	60.00	
T-LUS-05	80.00	
T-LUS-06	100.00	

Product commercial data

Product Code	Dimensions			Quantity [pcs]			Weight [kg]			Bar Codes
	D [mm]	H [mm]	S [mm]	Box	Outer	Pallet	Box	Outer	Pallet	
T-LUS-03	3	24	4	100	1200	28800	0.32	3.8	122.2	5906675132099
T-LUS-04	4	35	9	100	900	21600	0.72	6.5	185.5	5906675132105
T-LUS-05	5	40	8	50	900	21600	0.70	12.6	332.4	5906675132112
T-LUS-06	6	48	9	50	900	21600	1.23	22.1	561.4	5906675132129