

R-MBA STEEL FACADE FIXING

Fire-resistant metal insulation fixing



FEATURES AND BENEFITS

Metal facade fixing, recommended for use when fire resistance (R120) is a requirement

Fast and simple hammer-set installation reduces working time. Extensive dimensional range allows anchorage of insulation boards up to 250 mm thick


For soft thermal insulation, we recommend installation with an additional MKC-85 steel washer (diameter 85 mm)

Made of galvanized steel, resistant to damage and corrosion

For countersunk installation, we recommend using the R-KFS-90/20 cutter and the R-TFIX-CAP90-MW mineral wool cup



BASE MATERIALS

-  Concrete C20/25-C50/60
-  Solid Brick
-  Solid Sand-lime Brick
-  Aerated concrete
-  Ceramic Hollow Block
-  Hollow Sand-lime Brick ≥ 15MPa



The R-MBA metal facade fixing is classified in class A1 for fire and is recommended for applications with the required fire resistance R120. A wide range of facade fixing lengths (90-300 mm) makes it possible anchoring of thermal insulation boards up to 250 mm thick. For soft insulation materials we recommend mounting the anchors with a dedicated MKC steel washer with a diameter of 85 mm. For countersunk installation, we recommend using the R-KFS-90/20 cutter and the R-TFIX-CAP90-MW mineral wool cap.

APPLICATIONS

Mineral wool (MW) boards

Glass wool

Lightweight wood wool building boards

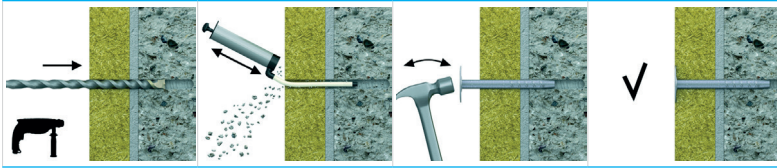
Lightweight recycled panels

Polystyrene (EPS) boards

Polyurethane (PU) boards

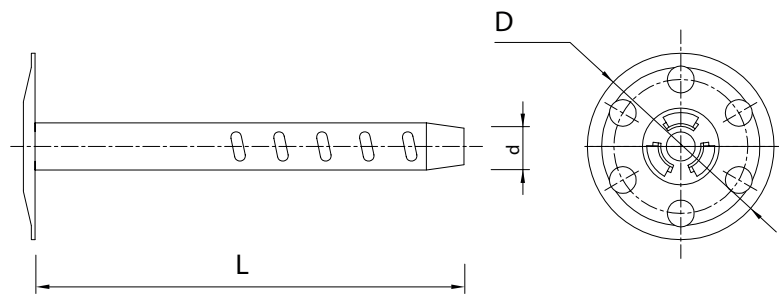


INSTALLATION GUIDE



1. Drill a hole of required diameter and depth
2. Clean the drilled hole 3x.
3. Gently drive the steel dowel into the hole until the correct anchorage depth for the fastener is achieved. For soft substrates, use the MKC 85 mm steel washer
4. Correctly installed steel facade fixing

PRODUCT INFORMATION



Size	Product Code	Fixing			Fixture
		Diameter	Length	Plate diameter	Max. thickness
		d	L	D	t _{fix, max}
[mm]					
M8	R- MBA-08090	8	90	35	40
	R- MBA-08110	8	110	35	60
	R- MBA-08140	8	140	35	90
	R- MBA-08170	8	170	35	120
	R- MBA-08200	8	200	35	150
	R- MBA-08210	8	210	35	160
	R- MBA-08230	8	230	35	180
	R- MBA-08250	8	250	35	200
R- MBA-08300	8	300	35	250	

INSTALLATION DATA









Substrate			Concrete	Solid brick	Perforated ceramic brick	Sand-lime hollow brick	Autoclaved aerated concrete
Hole diameter in substrate	d ₀	[mm]	8	8	8	8	-
Min. hole depth in substrate	h ₀	[mm]	40	40	60	40	-
Min. installation depth	h _{nom}	[mm]	30	30	50	30	50
Min. substrate thickness	h _{min}	[mm]	80	80	80	80	80
Min. spacing	s _{min}	[Nm]	75	75	75	75	75
Min. edge distance	c _{min}	[mm]	75	75	75	75	75

BASIC PERFORMANCE DATA

Performance data for single anchor without influence of edge distance and spacing

Substrate		Concrete	Solid brick	Sand-lime solid brick	Perforated ceramic brick	Sand-lime hollow brick	Autoclaved aerated concrete
Effective embedment depth h _{ef}	d ₀	30	30	30	50	30	50
MEAN ULTIMATE LOAD N _{Rk}							
R- MBA	[kN]	0.90	0.50	0.60	0.25	0.40	0.80
CHARACTERISTIC LOAD N _{Rd}							
R- MBA	[kN]	0.35	0.20	0.24	0.10	0.16	0.40
RECOMMENDED LOAD N _{rec}							
R- MBA	[kN]	0.24	0.14	0.17	0.07	0.11	0.29

RELATED PRODUCT 

<p>Dead Blow Hammer R-HDH-600</p> 	<p>Counterbore cutter R-KFS-90/20</p> 	<p>Steel washer MKC-85</p> 	<p>Mineral wool cap R-TFIX-CAP90-MW</p> 
<p>Hammer with a special system that absorbs the impact energy</p>	<p>Cutter accessory for counterbored installation of TFIX hammer-in facade insulation fixings</p>	<p>Metal washer for use in combination with metal facade fixings from MBA range</p>	<p>Post-installed mineral wool cap reduces heat transmission and results in a homogenous insulation surface</p>
<p>Drill bits Rebardrill SDS plus Rebardrill SDR</p> 	<p>Drill bits Aggressor SDS plus Aggressor SDSA</p> 		
<p>High-quality SDS plus drill bits for drilling in reinforced concrete</p>	<p>Drill bits SDS plus for fast drilling in concrete</p>		
<p>Cordless RawlHammer 18V SDS plus RawlHammer R-PRH18</p> 	<p>Cordless RawlWrench 18V 210Nm RawlWrench R-PID18</p> 		
<p>The cordless rotary hammer with 18V battery voltage and 2J impact energy, compatible with SDS plus accessories, is the perfect solution for the preparation of cylindrical and axial holes</p>	<p>Impact driver 18V with a torque of 210 Nm and multi-head holder allows you to work with bits and sockets</p>		