

## R-STUDS Metric Threaded Rods - Steel Class 1.4529 HCR, Flat Head

Threaded rod made out of an austenitic special steel 1.4529 HCR classified in the highest corrosion resistance class



### Product information

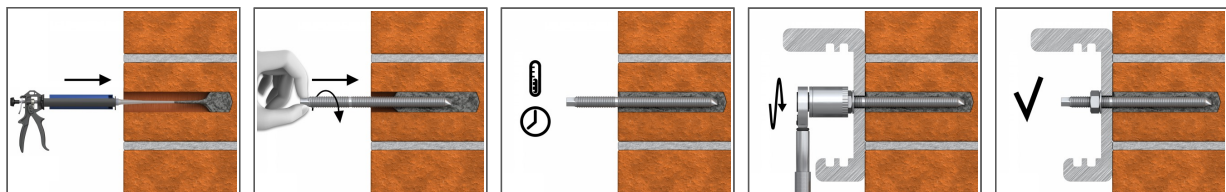
#### Features and benefits

- Stainless steel 1.4529 HCR is characterized by its high resistance to local corrosion phenomena, such as crevice corrosion, pitting, or chlorine-induced stress corrosion cracking
- It demonstrates excellent mechanical properties and can be used in a wide temperature range
- In contact with sulphuric or phosphoric acid, or chlorides and salts, it offers excellent resilience and resistance to wear
- High-performance bonded anchors offer high load-bearing capacities
- Can be post-installed through fixture in some cases. (Consult technical advisory service)
- Flat head for quick manual installation without a setting tool

#### Applications

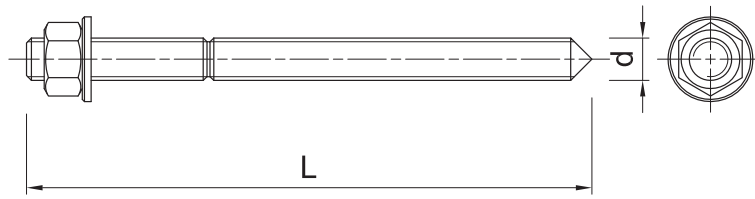
- Shipbuilding
- Offshore technology
- Swimming pool technology
- Plants in the chemical industry
- Heat exchangers and evaporators
- Flue gas desulphurization plants
- Tanks for aggressive chemical products
- Tunnel construction

#### Installation guide



1. Drill hole to the required diameter and depth for stud size being used.
2. Clean the hole thoroughly with hand pump and hole brush
3. If required, insert the mesh sleeve into position
4. Fill hole with the required resin to the recommended fill level. (Follow the relevant instructions for the resin product)
5. Insert the threaded stud slowly and with a slight twisting motion, until the required embedment depth is reached
6. Leave undisturbed until curing time of resin has elapsed
7. Attach fixture and tighten the nut to the required installation torque

### Product information



Size	Product Code	Anchor		Fixture		
		Diameter	Length	Max. thickness $t_{fix}$ for:		Hole diameter
		d	L	$h_{nom, 6d}$	$h_{nom, 12d}$	$d_f$
		[mm]	[mm]	[mm]	[mm]	[mm]
M8	R-STUDS-08110HCRFL	8	110	52	4	9
M10	R-STUDS-10130HCRFL	10	130	58	-	12
M12	R-STUDS-12160HCRFL	12	160	73	1	14
M16	R-STUDS-16190HCRFL	16	190	75	-	18
M20	R-STUDS-20260HCRFL	20	260	117	-	22

### Product commercial data

Size	Product Code	Anchor		Quantity [pcs]			Weight [kg]			Bar Codes
		Diameter [mm]	Length [mm]	Box	Outer	Pallet	Box	Outer	Pallet	
M8	R-STUDS-08110HCRFL	8	110	10	10		0.44	0.44		5906675475059
M10	R-STUDS-10130HCRFL	10	130	10	10		0.81	0.81		5906675475066
M12	R-STUDS-12160HCRFL	12	160	10	10	5760	1.37	1.37	819.1	5906675468310
M16	R-STUDS-16190HCRFL	16	190	10	10		2.9	2.9		5906675475073
M20	R-STUDS-20260HCRFL	20	260	5	5		3.0	3.0		5906675475080