

GK Plastic Toggle with Angle Hook

Plastic toggle, medium duty plasterboard fixing



Product information

Features and benefits

- Fixing body made of impact resistant co-polymer of polypropylene
- Supplied with angle hook made of zinc electro-plated steel (10µm)
- Also available with countersunk head screw PZ 2

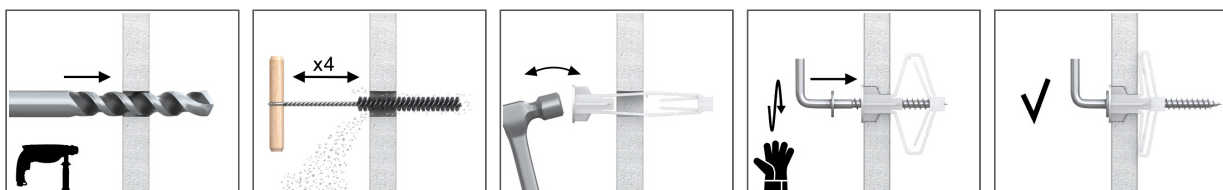
Applications

- Fixing light shelving, brackets and hooks.

Base materials

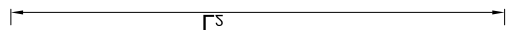
- Suitable for use in**
- Plasterboard

Installation guide



1. Drill a hole of the required diameter.
2. Compress the 'wings' and insert the fixing into the hole. Tap in lightly until flush.
3. Insert screw through the fixture into the fixing. Tighten until secure.

Product information



Product Code	Drill diameter	Screw dimensions	Substrate thickness, min.
	∅		
	[mm]		
08GK	8	3,5 x 35	12.5
10GK	10	4,0 x 50	9.5

Product commercial data

Product Code	Drill diameter [mm]	Screw dimensions [mm]	Substrate thickness, min. [mm]	Quantity [pcs]			Weight [kg]			Bar Codes
				Box	Outer	Pallet	Box	Outer	Pallet	
08GK	8	3,5 x 35	12.5	100	1600	38400	0.35	5.6	164.4	5906675193625
10GK	10	4,0 x 50	9.5	50	800	19200	0.40	6.4	184.4	5906675194226