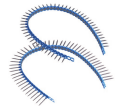


R-FSC Drywall collated screws for metal

Drywall screw with fine thread for plasterboard fixing



Approvals and Reports

PN-EN 14566 + A1: 2012

DoP-EN14566

Reaction to fire: A1

Flexural strength: pass

CE
10

Product information

Features and benefits

- Top-quality material and dimensional accuracy of the collating strip for improved firmness and stability of screw feeding into the screwdriver ensuring minimised screw jamming or skipping risk
- Optimised screw tip geometry - excellent drilling capability
- No pre-drilling required
- Low-carbon steel with black phosphate finish for increased durability
- Bugle head with PH2 drive designed to finish flush with plasterboard

Applications

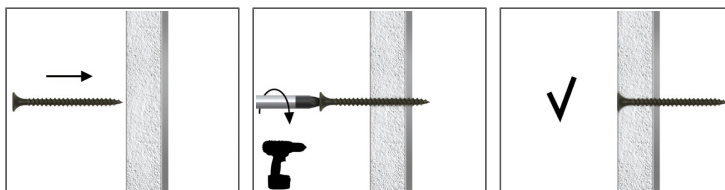
- Fastening plasterboard to metal framework

Base materials

Approved for use in:

- Structural Steel

Installation guide



1. Drive the screw straight until the head is flush
2. Screws with countersunk head allow flush connection

Product information

Size	Product Code	Fixing		Fixture
		Diameter	Length	Max. thickness
		d	L	t _{fix}
		[mm]	[mm]	[mm]
Ø03.5	R-FSC-3525	3.5	25	14
	R-FSC-3538	3.5	38	27
	R-FSC-3542	3.5	42	31
	R-FSC-3545	3.5	45	34

Installation data

Size	Ø3.5		
Substrate	Steel		
Min. installation depth	h _{nom}	[mm]	-
Min. substrate thickness	h _{min}	[mm]	0.5
Min. spacing	s _{min}	[mm]	30
Min. edge distance	c _{min}	[mm]	30

Basic performance data

Performance data for single screw without influence of edge distance and spacing

Size	Ø3.5		
Substrate	Steel		
Substrate thickness h _{min}	[mm]	0.5	
CHARACTERISTIC LOAD F_{Rk}			
FS F _{Rk}	[kN]	0.57	
DESIGN LOAD F_{Rd}			
FS F _{Rd}	[kN]	0.29	
RECOMMENDED LOAD F_{REC}			
FS F _{rec}	[kN]	0.21	

Product commercial data

Product Code	Fixing		Quantity [pcs]			Weight [kg]			Bar Codes
	Diameter [mm]	Length [mm]	Box	Outer	Pallet	Box	Outer	Pallet	
R-FSC-3525	3.5	25	1000.0	12000.0	240000.0	1.53	18.4	397.2	5906675486659
R-FSC-3538	3.5	38	1000.0	10000.0	1000000.0	2.1	21.3	3430.0	5391528690299
R-FSC-3542	3.5	42	1000.0	1000.0	180000.0	2.2	2.2	423.3	5391528691036
R-FSC-3545	3.5	45	1000.0	10000.0	1000000.0	2.4	24.1	3890.8	5391528691661