

# GPAP Roofing nail washer

Nail washer for versatile applications



## Product information

### Features and benefits

- Wide washer for greater holding power and pull through resistance
- Circular socket for flush application of nail head
- Zinc electroplated for enhanced corrosion resistance

### Applications

- Wooden roof constructions
- Wooden fences
- Wood fibre boards
- Fixing of rubber sheets
- Fastening plastic elements liable to damage while installing
- Fixing of bitumic membrane on roof constructions

### Base materials

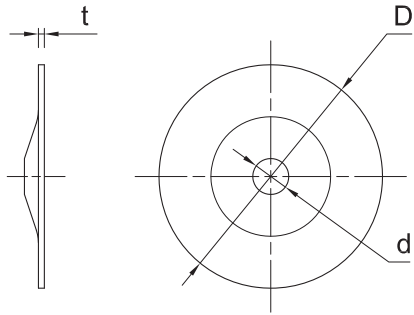
#### Approved for use in:

- Wood
- Timber
- Branches
- Plywood
- Chipboard
- PVC Profile
- Timber
- Wood with metal

## Installation guide

1. Choose the appropriate dimension and length of the nail
2. Insert the nail into the washer
3. Set the fastened element in required place and position
4. Hammer in the nail until the head is flush
5. Use the necessary quantity of nails to fasten the element secure

**Product information**



Product Code	Washer size
	[mm]
GPAP7	25-28

**Product commercial data**

Product Code	Washer size [mm]	Quantity [pcs]			Weight [kg]			Bar Codes
		Box	Outer	Pallet	Box	Outer	Pallet	
GPAP7	25-28	10	10	630	10.1	10.1	663.5	5906675001890