

R-STUDS Metric Threaded Rods - Steel Class 5.8, Zinc Flake

Threaded rod 5.8 grade steel, zinc flake (ZF) with increased corrosion resistance, for use with bonded anchors



Product information

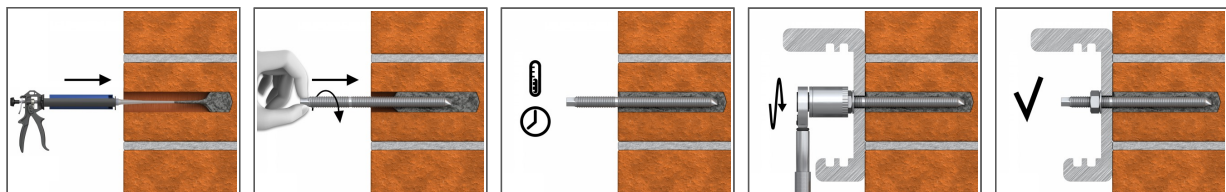
Features and benefits

- Hexagonal head for convenient use with torque wrench
- Special zinc flake corrosion-resistant coating
- Can be post-installed through fixture in some cases. (Consult technical advisory service)

Applications

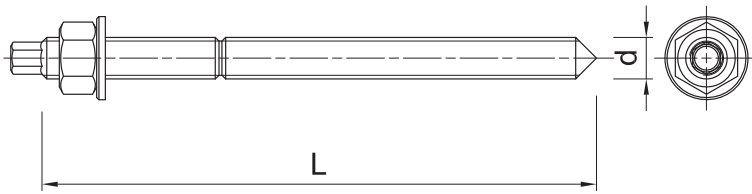
- Fastening with bonded anchors
- Balustrading & handrails
- Barriers
- Cable trays
- Consoles
- Curtain walling
- Formwork support systems
- Heavy machinery
- Lamps
- Safety barriers
- Road Signs
- Railings
- Public seating

Installation guide



1. Drill hole to the required diameter and depth for stud size being used.
2. Clean the hole thoroughly with hand pump and hole brush
3. If required, insert the mesh sleeve into position
4. Fill hole with the required resin to the recommended fill level. (Follow the relevant instructions for the resin product)
5. Insert the threaded stud slowly and with a slight twisting motion, until the required embedment depth is reached
6. Leave undisturbed until curing time of resin has elapsed
7. Attach fixture and tighten the nut to the required installation torque

Product information



Size	Product Code	Anchor		Fixture		
		Diameter	Length	Max. thickness t_{fix} for:		Hole diameter
		d	L	$h_{nom, 6d}$	$h_{nom, 12d}$	d_f
		[mm]	[mm]	[mm]	[mm]	[mm]
M10	R-STUDS-10130-ZF	10	130	58	-	12
M12	R-STUDS-12160-ZF	12	160	73	1	14

Product commercial data

Size	Product Code	Anchor		Quantity [pcs]			Weight [kg]			Bar Codes
		Diameter [mm]	Length [mm]	Box	Outer	Pallet	Box	Outer	Pallet	
M10	R-STUDS-10130-ZF	10	130	10	300	9000	0.80	24.0	750.0	5906675402963
M12	R-STUDS-12160-ZF	12	160	10	120	5400	13.5	162.0	7320.0	5906675402970