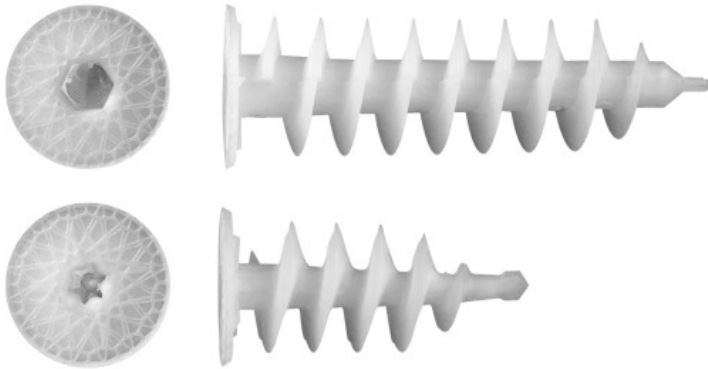


R-ISO-PLUG Insulation fixings

For fastening lightweight fixtures on insulated facades through the renders eliminating thermal bridging



Product information

Features and benefits

- Unique construction of screw thread section provides support for wide variety of diameters, without limitation of screws' length.
- Unique self-drilling point allow precise installation through any type of façade plaster, preventing from breaking its surface
- No thermal bridging
- Ribs on the internal surface of plate provide locking in surface during driving screws in and out and even surface of plug with substrate after fixing
- Proper shape of TX/HEX socket provides stabilization during the process of driving in by providing necessary grip for the bit
- Surface of the plate allows hiding installation hole and perfectly matches the surface of plaster layer, not deforming it
- Can be installed with commercial drill/drive tool.

Applications

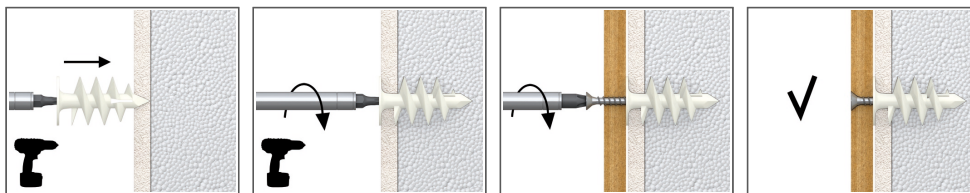
- Façade construction (ETICS)
- Attachments to insulation

Base materials

Approved for use in:

- Polystyrene (EPS) Boards
- Mineral Wool Boards

Installation guide

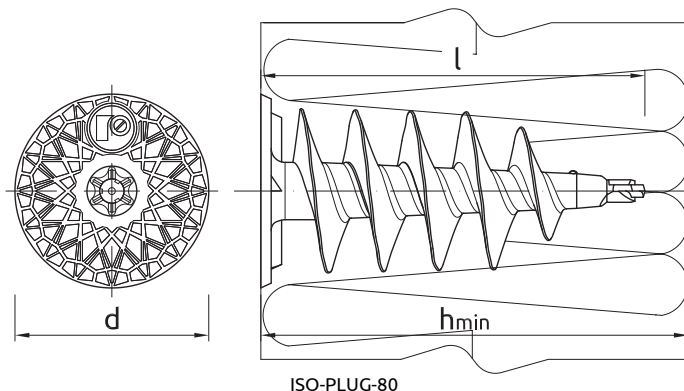


1. Drive R-ISO-PLUG into the insulation material (manually, or with an electric screwdriver) until installation depth reached.
2. Insert screw of required diameter into plug through fixture and tighten.
3. Fixtures are fixed with a proper screw diameter. R-ISO-PLUG-50 with diameter of the screw between 4-5mm and R-ISO-PLUG-80 with screw diameter 6-7mm.

Product information

| Product Code | Plug | | | Recommended screw diameter |
|---------------|--------|----------------|--------------------------|----------------------------|
| | Length | Plate diameter | Screw length inside plug | |
| | l | d | | [mm] |
| R-ISO-PLUG-50 | 55 | 28 | 50 | 4,0 - 5,0 |
| R-ISO-PLUG-80 | 85 | 28 | 50 | 6,0 - 7,0 |

Installation data



| Size | | | | |
|--------------------------|-----------|------|------|-------|
| Min. installation depth | h_{nom} | [mm] | 55 | 85 |
| Min. substrate thickness | h_{min} | [mm] | 60 | 100 |
| Bite type | | | TX40 | HEX 8 |
| Fixing diameter | d | [mm] | 28 | 28 |

Basic performance data

| Substrate | | Insulation Board | |
|---|------|------------------|--|
| MEAN ULTIMATE LOAD $F_{Ru,m}$ | | | |
| R-ISO-PLUG-50 | [kN] | 0.14 | |
| R-ISO-PLUG-80 | [kN] | 0.24 | |
| CHARACTERISTIC LOAD F_{Rk} | | | |
| R-ISO-PLUG-50 | [kN] | 0.11 | |
| R-ISO-PLUG-80 | [kN] | 0.20 | |
| DESIGN LOAD F_{Rd} | | | |
| R-ISO-PLUG-50 | [kN] | 0.05 | |
| R-ISO-PLUG-80 | [kN] | 0.10 | |
| RECOMMENDED LOAD F_{rec} | | | |
| R-ISO-PLUG-50 | [kN] | 0.04 | |
| R-ISO-PLUG-80 | [kN] | 0.07 | |

Product commercial data

| Size | Product Code | Quantity [pcs] | | | Weight [kg] | | | Bar Codes |
|------|--------------|----------------|-------|--------|-------------|-------|--------|-----------|
| | | Box | Outer | Pallet | Box | Outer | Pallet | |
| | | | | | | | | |