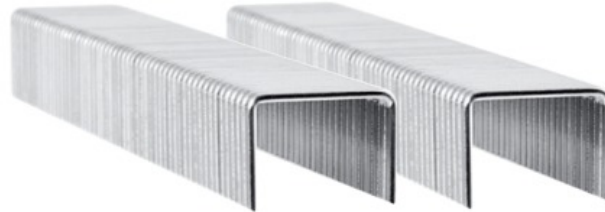


## RT-KSS140 Stainless steel staples RL 140

Stainless steel flat wire staples; Professional line; Type 140; Ideal for working with insulation material in wet areas



### Product information

#### Features and benefits

- Wide 1.25mm flat wire staple provides lack of damages whist installing delicate materials
- Made of tempered wire, it is not bent when applied to hard surfaces
- Flat wire stainless steel staples for best corrosion resistance

#### Applications

- Professional wide staple for roofers designed for repairs and construction work

#### Base materials

- Timber
- Oriented Strand Board
- Plasterboard
- Timber
- Wood
- Plywood

#### Corresponding products

- RT-KGR0011 Hammer Tacker, 6-10 mm
- RT-KGR0013 Hammer Tacker - Roofing pro 6-14 mm
- RT-KGR0014 Hand stapler - Trade, 6-10 mm



## Product commercial data

Index	Type	Height	Length	Depth	Box	Outer	Box weight	Outer weight	EAN
		[mm]	[mm]	[mm]	[pcs]	[pcs]	kg	kg	
RT-KSS14010SS	RL140	10	10,5	1.25	1250	6	0.94	11.30	59066753282 56