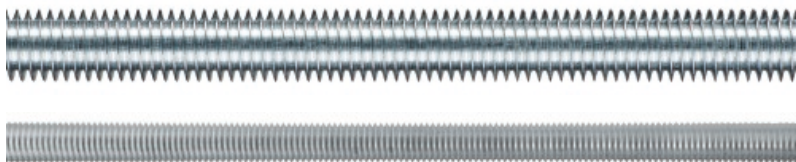


Threaded rods DIN 975

Threaded rods are designed for connecting threaded components. Finished in zinc electroplated coating for enhanced corrosion resistance



Product information

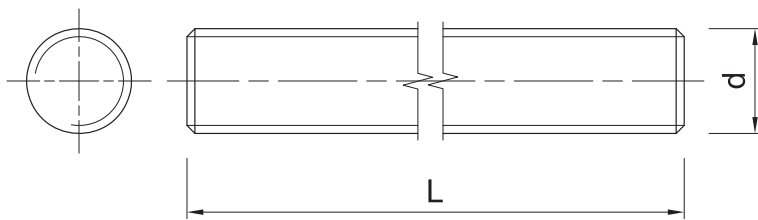
Features and benefits

- Available in zinc plated and stainless steel versions
- Material: Electroplated steel Class 4.8
- Available in 1 or 2 meters length

Applications

- Balustrading
- General wood joints
- Steelwork
- Steel constructions
- Steel studs, Carbon steel class 5.8
- Timber constructions

Product information



Size	Product Code	Length	
		L	
		[mm]	
M5	975-05-1000-48-ZN	1000	
	975-06-1000-48-ZN	1000	
M6	975-06-2000-48-ZN	2000	
	975-08-1000-48-ZN	1000	
M8	975-10-1000-48-ZN	1000	
	975-10-2000-48-ZN	2000	
M10	975-12-1000-48-ZN	1000	
	975-12-2000-48-ZN	2000	
M12	975-14-1000-48-ZN	1000	
	975-14-2000-48-ZN	2000	
M14	975-16-1000-48-ZN	1000	
	975-16-2000-48-ZN	2000	
M16	975-18-1000-48-ZN	1000	
	975-18-2000-48-ZN	2000	
M18	975-20-1000-48-ZN	1000	
	975-20-2000-48-ZN	2000	
M20	975-22-1000-48-ZN	1000	
	975-24-1000-48-ZN	1000	
M24	975-08-2000-48-ZN	2000	
	975-24-2000-48-ZN	2000	
	975-27-1000-48-ZN	1000	
M27	975-30-1000-48-ZN	1000	
	975-30-2000-48-ZN	2000	
M30	975-33-1000-48-ZN	1000	
	975-36-1000-48-ZN	1000	
M33	975-42-1000-48-ZN	1000	
M36			
M42			

Product commercial data

Product Code	Length [mm]	Quantity [pcs]			Weight [kg]			Bar Codes
		Box	Outer	Pallet	Box	Outer	Pallet	
975-05-1000-48-ZN	1000	50	50	7200	5.6	5.6	831.4	5906675106298
975-06-1000-48-ZN	1000	50	50	5000	7.2	7.2	745.5	5906675100562
975-06-2000-48-ZN	2000	25	25	2600	8.0	8.0	862.0	5906675136332
975-08-1000-48-ZN	1000	50	50	3000	12.4	12.4	772.8	5906675100968
975-10-1000-48-ZN	1000	25	25	2000	10.1	10.1	833.6	5906675101361
975-10-2000-48-ZN	2000	25	25	1000	23.4	23.4	966.0	5906675106304
975-12-1000-48-ZN	1000	20	20	1300	12.0	12.0	807.5	5906675101866
975-12-2000-48-ZN	2000	20	20	600	27.7	27.7	861.0	5906675106311
975-14-1000-48-ZN	1000	20	20	1000	16.5	16.5	854.1	5906675106335
975-14-2000-48-ZN	2000	10	10	450	19.2	19.2	894.0	5906675106342
975-16-1000-48-ZN	1000	10	10	700	11.3	11.3	821.4	5906675102764
975-16-2000-48-ZN	2000	10	10	350	26.0	26.0	940.0	5906675106359
975-18-1000-48-ZN	1000	10	10	560	16.0	16.0	926.0	5906675769271
975-18-2000-48-ZN	2000	10	10		26.0	26.0		

Product commercial data

Product Code	Length [mm]	Quantity [pcs]			Weight [kg]			Bar Codes
		Box	Outer	Pallet	Box	Outer	Pallet	
975-20-1000-48-ZN	1000	10	10	500	18.5	18.5	956.3	5906675103563
975-20-2000-48-ZN	2000	5	5	240	18.0	18.0	894.0	5906675106366
975-22-1000-48-ZN	1000	5	5	385	10.8	10.8	861.6	5906675769370
975-24-1000-48-ZN	1000	5	5	350	13.5	13.5	974.2	5906675106373
975-08-2000-48-ZN	2000	25	25	1500	14.7	14.7	912.0	5906675136349
975-24-2000-48-ZN	2000	5	5	150	25.7	25.7	801.0	5906675106380
975-27-1000-48-ZN	1000	5	5	200	18.5	18.5	770.0	5906675769479
975-30-1000-48-ZN	1000	5	5	200	21.5	21.5	891.4	5906675769578
975-30-2000-48-ZN	2000	3	3	105	24.8	24.8	898.0	5906675106397
975-33-1000-48-ZN	1000	3	3	120	15.9	15.9	666.0	5906675769585
975-36-1000-48-ZN	1000	3	3	120	20.1	20.1	834.0	5906675769592
975-42-1000-48-ZN	1000	1	1	100	1.00	1.00	130.0	5906675205267