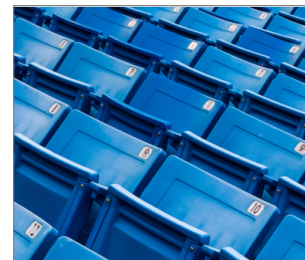


# Concrete screw re-usability testing gauge



## Product information

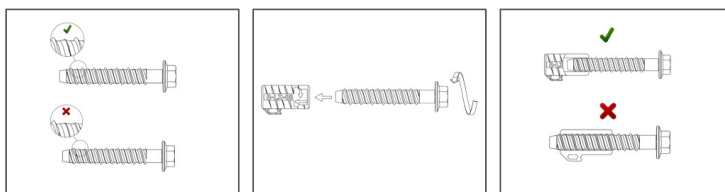
### Features and benefits

- Testing Gauge allows to determine whether the product R-LX is suitable for re-use.

### Applications

- Concrete screw re-usability testing gauge

## Installation guide



1. Visual assessment. The anchor thread shall not be damaged.
2. Drive the screw counterclockwise into the no-go gauge with at least one revolution during the test. You can re-use the anchor if its tip is not visible on the other end of the no-go gauge.
3. Screws which failed the test 1 or the test 2 are not recommended to use.

## Product information

| Product Code      | Description            |
|-------------------|------------------------|
|                   | R-S1-LX-TEST-08/2      |
| R-S1-LX-TEST-10/2 | Wear Gauge for R-LX-10 |
| R-S1-LX-TEST-14/2 | Wear Gauge for R-LX-14 |

## Product commercial data

| Product Code      | Description            | Quantity [pcs] |       |        | Weight [kg] |       |        | Bar Codes     |
|-------------------|------------------------|----------------|-------|--------|-------------|-------|--------|---------------|
|                   |                        | Box            | Outer | Pallet | Box         | Outer | Pallet |               |
| R-S1-LX-TEST-08/2 | Wear Gauge for R-LX-08 | 1              | 1     | 320    | 0.01        | 0.01  | 33.2   | 5906675437408 |
| R-S1-LX-TEST-10/2 | Wear Gauge for R-LX-10 | 1              | 1     | 320    | 0.02        | 0.02  | 34.8   | 5906675437545 |
| R-S1-LX-TEST-14/2 | Wear Gauge for R-LX-14 | 1              | 1     | 320    | 0.02        | 0.02  | 37.0   | 5906675439396 |