

T-LST WELDED CHAIN DIN 5685A

Welded chain for fastening, towing and rising of middleweight elements



Product information

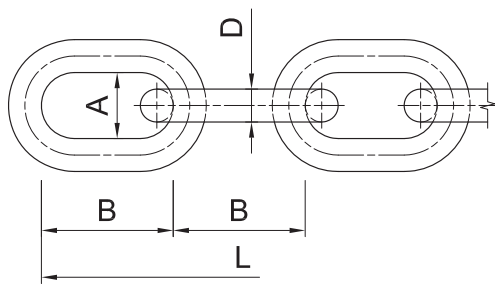
Features and benefits

- Hot galvanized for enhanced corrosion resistance
- Manufactured in accordance with DIN 5685A
- Short, welded links
- Available on the plastic reel
- Grinded welds on the links

Applications

- Applicable for general purposes
- Middleweight elements fastening
- Placing fences, barriers, etc.
- Towing and raising of middleweight elements

Product information



Product Code	Chain diameter	Chain length	Chain dimension	
	D	L	A	B
	[mm]	[m]	[mm]	[mm]
T-LST-03-R	3	50	5.4	16
T-LST-04-R	4	25	7.2	19
T-LST-05-R	5	25	9	21
T-LST-06-R	6	20	10.8	24
T-LST-08-R	8	12	11.8	32

Product commercial data

Product Code	Chain diameter [mm]	Quantity [pcs]			Weight [kg]			Bar Codes
		Box	Outer	Pallet	Box	Outer	Pallet	
T-LST-03-R	3	50	50	2400	7.4	7.4	383.8	5906675012339
T-LST-04-R	4	25	25	1800	6.7	6.7	515.1	5906675012346
T-LST-05-R	5	25	25	1800	9.4	9.4	709.1	5906675012353
T-LST-06-R	6	20	20	1440	12.4	12.4	920.4	5906675012360
T-LST-08-R	8	12	12	864	13.9	13.9	1032.3	5906675012377