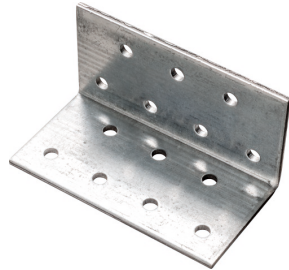


# D-KF Perforated equal length angle brackets

Perforated equal length angle brackets for connecting of wood construction elements



## Approvals and Reports

- ETA-12/0523



## Product information

### Features and benefits

- Connection of wooden construction elements
- Steel sheet thickness: 2.0 mm
- Zinc electroplated for enhanced corrosion resistance
- Anti-corrosion coating thickness min. 8µm

### Applications

- Wooden constructions
- Wooden fences
- Window ledge supports
- Shelving reinforcement
- Counter brackets
- Pergolas, bowers, sheds

### Base materials

#### Approved for use in:

- Timber

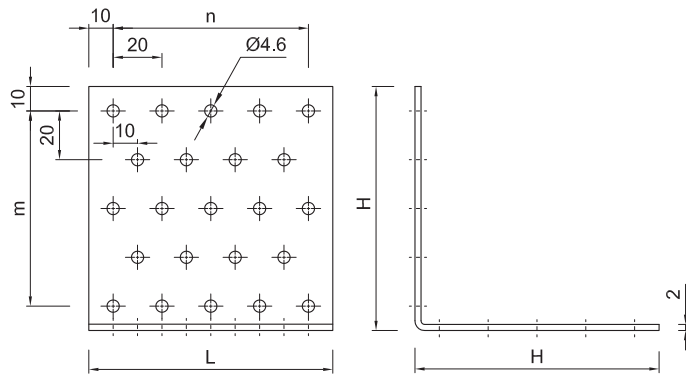
#### Also suitable for use in:

- Chipboard

## Installation guide

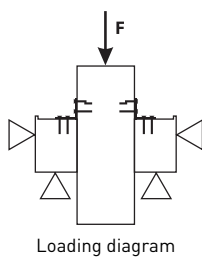
1. Choose the right size of wood connector
2. Set the connector in required place and position
3. Fasten the connector using anchor nails or adequate screws
4. Place another element and fasten it secure

**Product information**



Product Code	Connector dimensions		Number of holes		
	Dimensions		per row n	per row m	Ø4.6
	H	L			
[mm]					
D-KF-114	100	40	2	5	2 x 8
D-KF-116	100	60	3	5	2 x 13
D-KF-118	100	80	4	5	2 x 18
D-KF-444	40	40	2	2	2 x 3
D-KF-446	40	60	3	2	2 x 5
D-KF-448	40	80	4	2	2 x 7
D-KF-554	52	40	1	2	2 x 4
D-KF-664	60	40	2	3	2 x 5
D-KF-665	60	50	3	3	2 x 8
D-KF-666	60	60	3	3	2 x 8
D-KF-668	60	80	4	3	2 x 11
D-KF-884	80	40	2	4	2 x 6
D-KF-886	80	60	3	4	2 x 10
D-KF-888	80	80	4	4	2 x 14
D-KF-1110	100	100	5	5	2 x 23
D-KF-1114	100	140	7	5	2 x 33
D-KF-4410	40	100	5	2	2 x 9

**Basic performance data**



Product Code	Load resistance		
	Characteristic	Design	Recommended
	[kN]	[kN]	[kN]
D-KF-114	6.16	2.00	1.40
D-KF-116	6.16	2.00	1.40
D-KF-118	6.16	2.00	1.40
D-KF-444	3.58	1.20	0.90
D-KF-446	3.58	1.20	0.90
D-KF-448	3.58	1.20	0.90
D-KF-664	3.49	1.10	0.80
D-KF-665	3.49	1.10	0.80
D-KF-666	3.49	1.10	0.80
D-KF-668	20.79	6.80	4.90
D-KF-884	13.30	4.30	3.00
D-KF-886	13.30	4.30	3.00
D-KF-888	13.30	4.30	3.00
D-KF-1110	6.16	2.00	1.40
D-KF-1114	6.16	2.00	1.40
D-KF-4410	3.58	1.20	0.90

## Product commercial data

Product Code	Connector dimensions		Quantity [pcs]			Weight [kg]			Bar Codes
	Dimensions [mm]		Box	Outer	Pallet	Box	Outer	Pallet	
D-KF-114 <sup>1)</sup>	100	40	50	50	4500	6.1	6.1	576.3	5906675499420
D-KF-116 <sup>1)</sup>	100	60	40	40	3000	7.2	7.2	568.2	5906675499628
D-KF-118 <sup>1)</sup>	100	80	30	30	1620	7.7	7.7	443.9	5906675499826
D-KF-444 <sup>1)</sup>	40	40	140	140	15120	8.1	8.1	907.0	5906675493428
D-KF-446 <sup>1)</sup>	40	60	90	90	4860	6.4	6.4	374.1	5906675493626
D-KF-448 <sup>1)</sup>	40	80	80	80	4320	7.6	7.6	441.3	5906675493725
D-KF-554 <sup>1)</sup>	52	40	100	100	5400	6.1	6.1	359.9	5906675495323
D-KF-664 <sup>1)</sup>	60	40	100	100	5000	7.3	7.3	396.5	5906675495422
D-KF-665 <sup>1)</sup>	60	50	50	50	7500	4.6	4.6	716.3	5906675495521
D-KF-666 <sup>1)</sup>	60	60	60	60	3240	6.5	6.5	381.9	5906675495620
D-KF-668 <sup>1)</sup>	60	80	50	50	4500	7.4	7.4	695.1	5906675495828
D-KF-884 <sup>1)</sup>	80	40	70	70	7560	7.2	7.2	810.9	5906675497426
D-KF-886 <sup>1)</sup>	80	60	50	50	6000	7.1	7.1	885.0	5906675497624
D-KF-888 <sup>1)</sup>	80	80	35	35	3780	6.7	6.7	749.7	5906675497822
D-KF-1110 <sup>1)</sup>	100	100	20	20	1080	6.0	6.0	351.8	5906675499024
D-KF-1114 <sup>1)</sup>	100	140	20	20	1500	7.3	7.3	577.5	5906675499222
D-KF-4410 <sup>1)</sup>	40	100	50	50	6250	6.0	6.0	784.4	5906675493824

1) ETA-12/0523