

## R-TFIX-CAP63-MW Mineral wool cap

Post-installed mineral wool cap reduces heat transmission and results in a homogeneous insulation surface



### Approvals and Reports

- ETA 17/0161
- UKTA-22/6348



### Product information

#### Features and benefits

- Cost-saving solution, as countersunk installation allows selection of shorter fixings.
- Results in homogeneous and smooth insulation surface
- Post-installed cap reduces heat transmission at fixing points

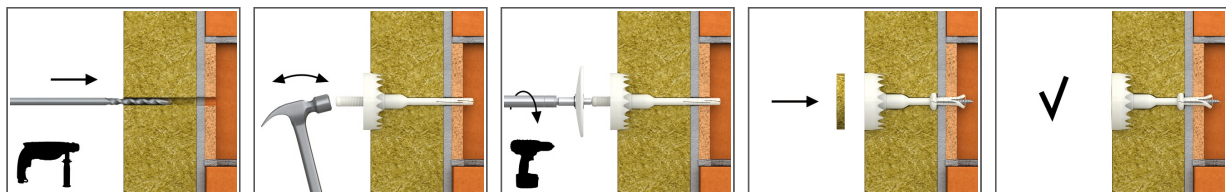
#### Applications

- Mineral wool (MW) boards

#### Base materials

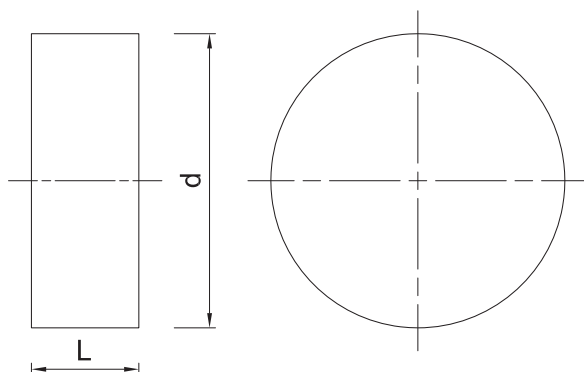
- Approved for use in:**
- Mineral Wool Boards

### Installation guide



1. Pre-assemble TFIX-8S-SETTING DEVICE with TFIX-8S fixing and then make installation of screw fixing
2. Drill a hole of required diameter and depth
3. Lightly tap the plastic sleeve through the insulation material into hole with a hammer, until fixing depth is reached
4. When using the TFIX-DEVICE the teeth should be embedded in the insulation material after hammering.
5. Tighten screw (using special TFIX-8ST-TOOL setting tool) until fixing is secure and flush with insulation material
6. Embedment depth of min 25mm in A,B,C,D materials and 65mm in Aerated Concrete Block
7. Drilling depth of min 40mm in A,B,C,D materials and 80mm in Aerated Concrete Block
8. Insert cap into countersunk hole in insulation

### Product information



Product Code	Material	Diameter	High
		d	L
		[mm]	
R-TFIX-CAP63-MW	mineral wool	63	10

### Product commercial data

Product Code	Diameter [mm]	High [mm]	Quantity [pcs]			Weight [kg]			Bar Codes
			Box	Outer	Pallet	Box	Outer	Pallet	
R-TFIX-CAP63-MW <sup>1)</sup>	63	10	100	100	9000	0.76	0.76	98.0	5906675390338

1) ETA 17/0161