

T-KARC Snap hooks without screw lock

Spring action gate snap hook for quick ropes and chains attachments



Product information

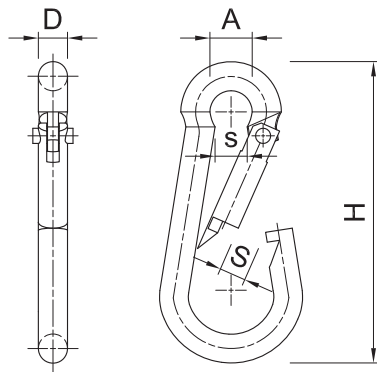
Features and benefits

- Manufactured in accordance with DIN 5299C
- Round shape of the eyelet gives ideal rope guidance and greater prevention of accidental rope damage
- Reversible spring action gate for increasing the safety of the hook and preventing the load from returning
- Made of low carbon steel
- Zinc electroplated for enhanced corrosion resistance
- Spring loaded gate allows to be quickly and securely attached to a wide range of fixing points

Applications

- Applicable for general purposes
- Connecting of chains and ropes
- Chain repair and chain attachments
- Raising of middleweight elements
- Setting up anchors and fixing grips

Product information



| Product Code | Dimensions | | | | |
|--------------|------------|------|------|------|------|
| | A | D | H | S | s |
| | [mm] | [mm] | [mm] | [mm] | [mm] |
| T-KARC-04 | 6 | 4 | 40 | 6 | 4 |
| T-KARC-05 | 8 | 5 | 50 | 7 | 5 |
| T-KARC-06 | 9 | 6 | 60 | 8 | 5 |
| T-KARC-07 | 10 | 7 | 70 | 8 | 7 |
| T-KARC-08 | 12 | 8 | 80 | 10 | 9 |
| T-KARC-09 | 12 | 9 | 90 | 10 | 10 |
| T-KARC-10 | 15 | 10 | 100 | 13 | 11 |
| T-KARC-12 | 20 | 12 | 140 | 20 | 15 |

Basic performance data

| Product Code | Load resistance | |
|--------------|-----------------|--|
| | Maximum | |
| | [kg] | |
| T-KARC-04 | 80.00 | |
| T-KARC-05 | 100.00 | |
| T-KARC-06 | 120.00 | |
| T-KARC-07 | 180.00 | |
| T-KARC-08 | 230.00 | |
| T-KARC-09 | 250.00 | |
| T-KARC-10 | 350.00 | |

Product commercial data

| Product Code | Dimensions | | | | | Quantity [pcs] | | | Weight [kg] | | | Bar Codes |
|--------------|------------|--------|--------|--------|--------|----------------|-------|--------|-------------|-------|--------|---------------|
| | A [mm] | D [mm] | H [mm] | S [mm] | s [mm] | Box | Outer | Pallet | Box | Outer | Pallet | |
| T-KARC-04 | 6 | 4 | 40 | 6 | 4 | 100 | 2400 | 60000 | 0.80 | 19.2 | 510.0 | 5906675968070 |
| T-KARC-05 | 8 | 5 | 50 | 7 | 5 | 50 | 1200 | 30000 | 0.79 | 19.0 | 504.0 | 5906675968179 |
| T-KARC-06 | 9 | 6 | 60 | 8 | 5 | 50 | 900 | 22500 | 1.34 | 24.1 | 633.0 | 5906675968278 |
| T-KARC-07 | 10 | 7 | 70 | 8 | 7 | 25 | 450 | 11250 | 1.10 | 19.8 | 525.0 | 5906675968377 |
| T-KARC-08 | 12 | 8 | 80 | 10 | 9 | 25 | 450 | 11250 | 1.50 | 27.0 | 705.0 | 5906675968476 |
| T-KARC-09 | 12 | 9 | 90 | 10 | 10 | 25 | 200 | 5000 | 2.2 | 17.2 | 460.0 | 5906675968575 |
| T-KARC-10 | 15 | 10 | 100 | 13 | 11 | 15 | 180 | 4500 | 1.85 | 22.2 | 585.3 | 5906675968674 |
| T-KARC-12 | 20 | 12 | 140 | 20 | 15 | 10 | 80 | 2000 | 2.6 | 20.4 | 539.6 | 5906675968872 |