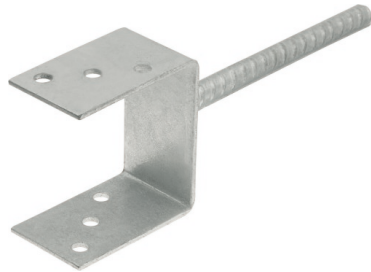


## D-TC Post base with embedment rebar

Post base with embedment rebar for anchoring wooden construction elements in concrete



### Approvals and Reports

- ETA-12/0523



### Product information

#### Features and benefits

- Anchoring wooden construction elements in concrete base
- Steel sheet thickness: 5.0 mm
- Embedment rebar: Ø16
- Hot-dip galvanized for enhanced corrosion resistance

#### Applications

- Wooden constructions
- Wooden decks
- Wooden fences
- Supporting posts
- Pergolas, bowers, sheds

#### Base materials

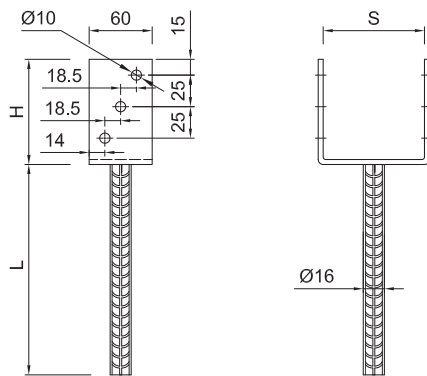
##### Suitable for use in

- Concrete
- Natural Stone (after site testing)

### Installation guide

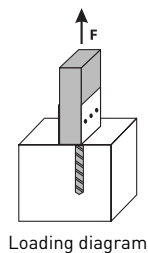
1. Choose the right size of post base
2. Dig a hole of required diameter and depth
3. Fill the hole with concrete
4. Insert the post base's rebar, correct the position and set firming struts
5. Leave the post base undisturbed meanwhile the concrete is curing
6. Place another element, set the required position and fasten it secure
7. TIP: It is possible to anchor the post base in cured concrete or natural stone using chemical anchors. Please refer to bonded anchor's installation guidelines

**Product information**



Product Code	Bracket		Post width
	Height	Rod length	
	H	L	S
[mm]			
D-TC-60	100	200	71
D-TC-80	25	250	81
D-TC-100	125	250	101
D-TC-120	125	250	121
D-TC-140	125	250	141
D-TC-716	100	200	71
D-TC-816	100	200	81
D-TC-916	100	200	91
D-TC-1016	100	200	101
D-TC-1116	100	200	111
D-TC-1216	100	200	121
D-TC-1416	100	200	141
D-TC-1616	100	200	161

**Basic performance data**



Loading diagram

Product Code	Load resistance		
	Characteristic	Design	Recommended
	[kN]	[kN]	[kN]
D-TC-716	5.24	1.70	1.20
D-TC-816	5.24	1.70	1.20
D-TC-916	5.24	1.70	1.20
D-TC-1016	5.24	1.70	1.20
D-TC-1116	5.24	1.70	1.20
D-TC-1216	5.24	1.70	1.20
D-TC-1416	5.24	1.70	1.20

**Product commercial data**

Product Code	Bracket		Quantity [pcs]			Weight [kg]			Bar Codes
	Height [mm]	Rod length [mm]	Box	Outer	Pallet	Box	Outer	Pallet	
D-TC-60 <sup>1)</sup>	100	200	1	1	400	1.06	1.06	452.0	5906675417363
D-TC-80 <sup>1)</sup>	25	250	1	1	400	1.35	1.35	568.0	5906675417370
D-TC-100 <sup>1)</sup>	125	250	1	1	400	1.42	1.42	598.0	5906675417387
D-TC-120 <sup>1)</sup>	125	250	1	1	300	1.75	1.75	553.5	5906675417394
D-TC-140 <sup>1)</sup>	125	250	1	1	300	2.0	2.0	623.7	5906675417400
D-TC-716 <sup>1)</sup>	100	200	1	1	300	0.97	0.97	319.6	5906675464121
D-TC-816 <sup>1)</sup>	100	200	1	1	384	0.97	0.97	403.2	5906675464220

## Product commercial data

Product Code	Bracket		Quantity [pcs]			Weight [kg]			Bar Codes
	Height [mm]	Rod length [mm]	Box	Outer	Pallet	Box	Outer	Pallet	
D-TC-916 <sup>1)</sup>	100	200	1	1	300	0.84	0.84	282.2	5906675464329
D-TC-1016 <sup>1)</sup>	100	200	1	1	42	1.00	1.00	72.0	5906675464428
D-TC-1116 <sup>1)</sup>	100	200	1	1	48	1.06	1.06	80.7	5906675464527
D-TC-1216 <sup>1)</sup>	100	200	1	1	240	1.09	1.09	292.3	5906675464626
D-TC-1416 <sup>1)</sup>	100	200	1	1	306	0.94	0.94	317.8	5906675464725
D-TC-1616 <sup>1)</sup>	100	200	1	1	300	1.40	1.40	450.0	5906675423715

1) ETA-12/0523