

K-P3-T-H Spring hooks DIN689

Eye hook for lifting loads



Product information

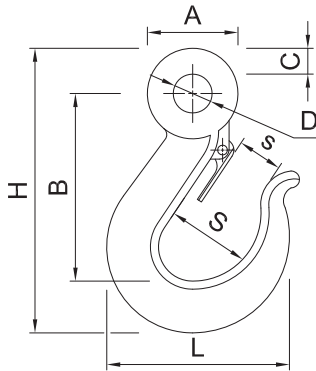
Features and benefits

- Made of forged carbon steel, quenched and tempered
- Zinc electroplated for enhanced corrosion resistance
- Includes trigger-clasp for increasing the safety of the hook and preventing the load from returning
- Fixed forged eye keeps rope or chain secure while at work
- Manufactured in accordance with DIN 689
- Simple to assemble with chains and ropes

Applications

- Applicable for general purposes
- Towing and raising of middle- and heavyweight elements
- Small construction cranes

Product information



Product Code	Dimensions							
	H	L	A	B	C	D	S	s
	[mm]	[mm]	[mm]	[mm]	[mm]	[mm]	[mm]	[mm]
K-P3-T-H-0250	88	54	28	64	7.5	12	18	15
K-P3-T-H-0500	117	72	36	85	10	16	24	18

Basic performance data

Product Code	Load resistance	
	Maximum	
	[kg]	
T-H-0250	250.00	
T-H-0500	500.00	

Product commercial data

Product Code	Dimensions								Quantity [pcs]			Weight [kg]			Bar Codes
	H [mm]	L [mm]	A [mm]	B [mm]	C [mm]	D [mm]	S [mm]	s [mm]	Box	Outer	Pallet	Box	Outer	Pallet	
K-P3-T-H-0250	88	54	28	64	7.5	12	18	15	20	20	2160	6.2	6.2	699.6	5906675511818
K-P3-T-H-0500	117	72	36	85	10	16	24	18	10	10	1080	3.1	3.1	364.8	5906675511825