

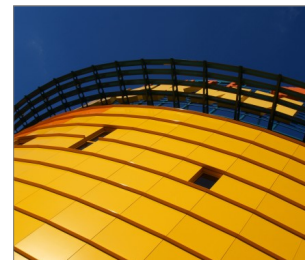
ALF Closed-end waterproof aluminium blind rivets

For fixing overlapped steel sheets



According to colorsystems:

RAL, RR, NCS



Product information

Features and benefits

- Coloured polyester protective coating with a thickness of 45-50 um (RAL, NCS, RR), provides additional protection against corrosion
- Various colours available to suit all metal sheet variants
- UV stabilizers ensure colour quality over a long period of use

Applications

- Rivet for mounting metal plates to each other or attaching into a light steel construction

Base materials

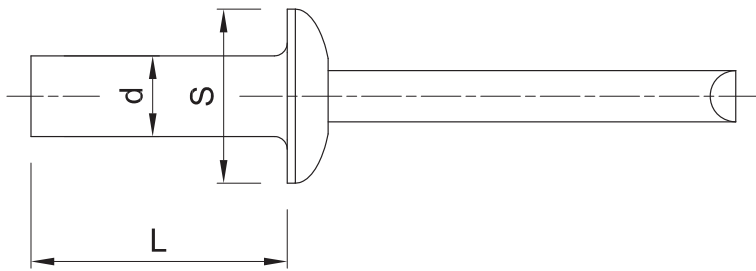
Approved for use in:

- Metal Sheet & Profiles
- Structural Steel

Installation guide

1. Drill the hole of required diameter in the substrate
2. Place the rivet into a drilled hole
3. By means of riveting tool mount the rivet

Product information



Product Code	Rivet			Fixture	
	Diameter	Length	Head size	Min. thickness	Max. thickness
	d	l	S _w	t _{fix}	
	[mm]				
ALF-4008	4	8	8.9	1	2.5
ALF-4095	4	9.5	8.9	2.5	4
ALF-4895	4.8	9.5	9.5	2.5	4
ALF-4812	4.8	12.5	9.5	5.5	7

Installation data

Size			4,0	4,8
Rivet diameter	d	[mm]	4	4.8
Min. spacing	s _{min}	[mm]	30	30
Min. edge distance	c _{min}	[mm]	10	10

Product commercial data

Product Code	Rivet		Quantity [pcs]			Weight [kg]			Bar Codes
	Diameter [mm]	Length [mm]	Box	Outer	Pallet	Box	Outer	Pallet	
ALF-4008	4	8	500	8000	192000	0.43	6.8	193.2	5906675811222
ALF-4095	4	9.5	500	8000	192000	0.80	12.8	337.2	5906675811321
ALF-4895	4.8	9.5	500	8000	192000	1.15	18.4	471.6	5906675812229
ALF-4812	4.8	12.5	500	8000	192000	1.20	19.2	490.8	5906675812625