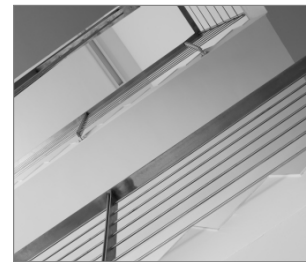


R-STUDS Metric Threaded Rods - Steel Class 5.8, Hot Dip Galvanized

Threaded rod 5.8 grade steel, hot-dip galvanized (HDG) with increased corrosion resistance, for use with bonded anchors



Product information

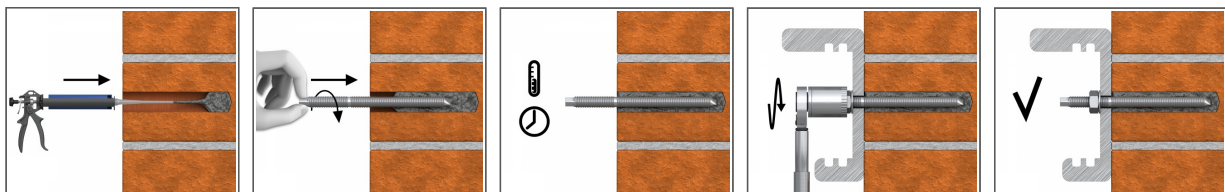
Features and benefits

- Threaded rod made of hot dip galvanized steel is suitable for outdoor use and in damp conditions
- Hexagonal head for convenient use with torque wrench

Applications

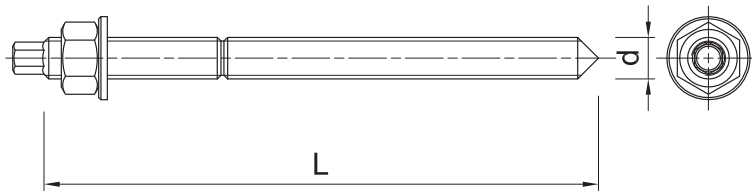
- Fastening with bonded anchors
- Balustrading & handrails
- Barriers
- Cable trays
- Consoles
- Curtain walling
- Formwork support systems
- Heavy machinery
- Lamps
- Safety barriers
- Road Signs
- Railings
- Public seating

Installation guide



1. Drill hole to the required diameter and depth for stud size being used.
2. Clean the hole thoroughly with hand pump and hole brush
3. If required, insert the mesh sleeve into position
4. Fill hole with the required resin to the recommended fill level. (Follow the relevant instructions for the resin product)
5. Insert the threaded stud slowly and with a slight twisting motion, until the required embedment depth is reached
6. Leave undisturbed until curing time of resin has elapsed
7. Attach fixture and tighten the nut to the required installation torque

Product information



| Size | Product Code | Anchor | | Fixture | | |
|------|-------------------|----------|--------|-------------------------------|----------------|---------------|
| | | Diameter | Length | Max. thickness t_{fix} for: | | Hole diameter |
| | | d | L | $h_{nom, 6d}$ | $h_{nom, 12d}$ | d_f |
| | | [mm] | [mm] | [mm] | [mm] | [mm] |
| M8 | R-STUDS-08110-HDG | 8 | 110 | 52 | 4 | 9 |
| M12 | R-STUDS-12160-HDG | 12 | 160 | 73 | 1 | 14 |
| M20 | R-STUDS-20220-HDG | 20 | 220 | 77 | - | 22 |
| | R-STUDS-20260-HDG | 20 | 260 | 117 | - | 22 |
| | R-STUDS-20270-HDG | 20 | 270 | 127 | 7 | 22 |
| M24 | R-STUDS-24300-HDG | 24 | 300 | 128 | - | 26 |

Product commercial data

| Size | Product Code | Anchor | | Quantity [pcs] | | | Weight [kg] | | | Bar Codes |
|------|-------------------|---------------|-------------|----------------|-------|--------|-------------|-------|--------|---------------|
| | | Diameter [mm] | Length [mm] | Box | Outer | Pallet | Box | Outer | Pallet | |
| M8 | R-STUDS-08110-HDG | 8 | 110 | 10 | 10 | 1280 | 0.70 | 0.70 | 119.6 | 5906675388632 |
| M12 | R-STUDS-12160-HDG | 12 | 160 | 10 | 10 | 500 | 2.3 | 2.3 | 145.0 | 5906675201474 |
| M20 | R-STUDS-20220-HDG | 20 | 220 | 10 | 10 | | 4.9 | 4.9 | | 5906675469010 |
| | R-STUDS-20260-HDG | 20 | 260 | 5 | 5 | 300 | 3.0 | 3.0 | 210.0 | 5906675201481 |
| | R-STUDS-20270-HDG | 20 | 270 | 5 | 5 | | 3.1 | 3.1 | | 5906675085555 |
| M24 | R-STUDS-24300-HDG | 24 | 300 | 5 | 5 | | 0.51 | 0.51 | | 5906675091310 |