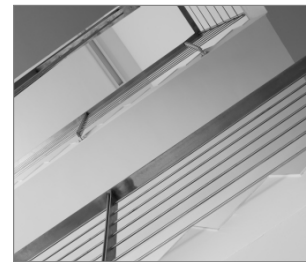


R-STUDS Metric Threaded Rods - Steel Class 5.8, Zinc Flake, Flat Head

Threaded rod 5.8 grade steel, zinc flake (ZF) with increased corrosion resistance, for use with bonded anchors



Product information

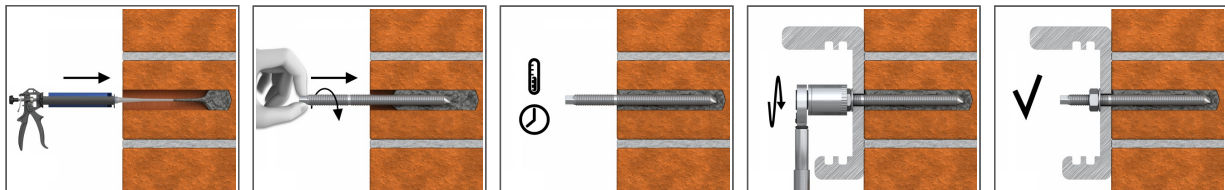
Features and benefits

- Special zinc flake corrosion-resistant coating
- Can be post-installed through fixture in some cases. (Consult technical advisory service)

Applications

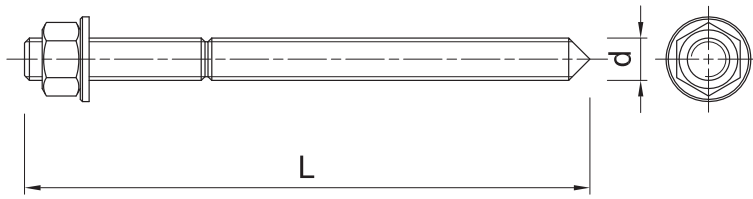
- Fastening with bonded anchors
- Balustrading & handrails
- Barriers
- Cable trays
- Consoles
- Curtain walling
- Formwork support systems
- Heavy machinery
- Lamps
- Safety barriers
- Road Signs
- Railings
- Public seating

Installation guide



1. Drill hole to the required diameter and depth for stud size being used.
2. Clean the hole thoroughly with hand pump and hole brush
3. If required, insert the mesh sleeve into position
4. Fill hole with the required resin to the recommended fill level. (Follow the relevant instructions for the resin product)
5. Insert the threaded stud slowly and with a slight twisting motion, until the required embedment depth is reached
6. Leave undisturbed until curing time of resin has elapsed
7. Attach fixture and tighten the nut to the required installation torque

Product information



Size	Product Code	Anchor		Fixture		
		Diameter	Length	Max. thickness t_{fix} for:		Hole diameter
		d	L	$h_{nom, 6d}$	$h_{nom, 12d}$	d_f
		[mm]	[mm]	[mm]	[mm]	[mm]
M8	R-STUDS-08110FL-ZF	8	110	52	4	9
M10	R-STUDS-10130FL-ZF	10	130	58	-	12
	R-STUDS-10170FL-ZF	10	170	98	38	12
M12	R-STUDS-12110FL-ZF	12	110	23	-	14
	R-STUDS-12160FL-ZF	12	160	73	1	14
	R-STUDS-12450FL-ZF	12	450	363	291	14
M16	R-STUDS-16190FL-ZF	16	190	75	-	18
M24	R-STUDS-24300FL-ZF	24	300	128	-	26

Product commercial data

Size	Product Code	Anchor		Quantity [pcs]			Weight [kg]			Bar Codes
		Diameter [mm]	Length [mm]	Box	Outer	Pallet	Box	Outer	Pallet	
M8	R-STUDS-08110FL-ZF	8	110	10	10	12960	0.44	0.44	600.2	5906675433073
M10	R-STUDS-10130FL-ZF	10	130	10	300	9000	0.80	24.0	750.0	5906675403137
	R-STUDS-10170FL-ZF	10	170	10	10		1.01	1.01		5906675473345
M12	R-STUDS-12110FL-ZF	12	110	10	10		1.30	1.30		5906675452579
	R-STUDS-12160FL-ZF	12	160	10	120	5400	1.34	16.1	753.6	5906675403144
	R-STUDS-12450FL-ZF	12	450	10	10		2.2	2.2		5906675472546
M16	R-STUDS-16190FL-ZF	16	190	10	60	3600	2.9	17.2	1059.6	5906675412207
M24	R-STUDS-24300FL-ZF	24	300	2	12	1000	2.0	11.7	1004.0	5906675412214