

WS Self-drilling drywall screws

Drywall screw for fixing plasterboard to light gauge steel structures or for joining metal supporting profiles in drywall systems



Approvals and Reports

PN-EN 14566 + A1: 2012

DoP-EN14566

Reaction to fire: A1

Flexural strength: pass

CE
10

Product information

Features and benefits

- Precision drive recess ensures high fastening quality
- Drilling capacity up to 2.0 mm
- Low-carbon steel with black phosphate finish for increased durability

Applications

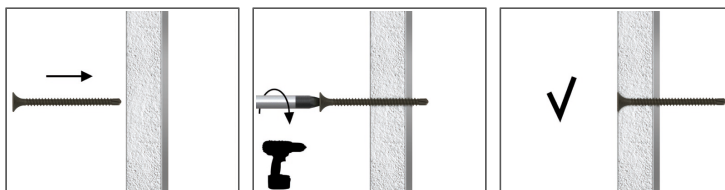
- Mainly for joining metal supporting profiles in drywall systems

Base materials

Approved for use in:

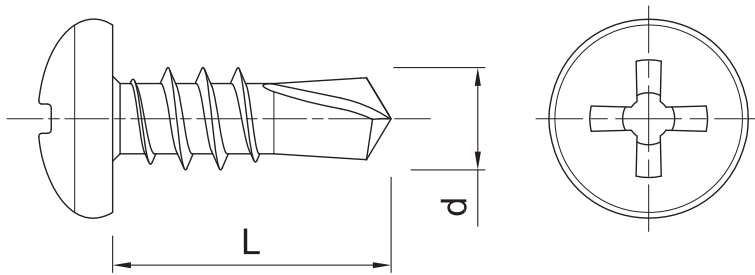
- Structural Steel

Installation guide



1. Drive the screw straight until the head is flush
2. Screws with countersunk head allow flush connection

Product information



Size	Product Code	Screw		Fixture
		Diameter	Length	Max. thickness
		d [mm]	L [mm]	t _{fix} [mm]
Ø3.5	WS-3525	3.5	25	14
	WS-3535	3.5	35	24
	WS-3545	3.5	45	34
	WS-3595	3.5	9.5	-
Ø3.9	WS-3911	3.9	11	-
Ø3.5	WS-3595-OC	3.5	9.5	-
Ø3.9	WS-3911-OC	3.9	11	-
Ø3.5	WSK-3525	3.5	25	14
	WSK-3535	3.5	35	24
	WSK-3545	3.5	45	34
	WSK-3595	3.5	9.5	-
Ø3.9	WSK-3911	3.9	11	-

Installation data

Size			Ø3.5	Ø3.9
Substrate			Steel	Steel
Min. installation depth	h _{nom}	[mm]	-	-
Min. substrate thickness	h _{min}	[mm]	0.5	0.5
Min. spacing	s _{min}	[mm]	30	30
Min. edge distance	c _{min}	[mm]	30	30

Basic performance data

Performance data for single screw without influence of edge distance and spacing

Size		Ø3.5	Ø3.9
Substrate		Steel	Steel
CHARACTERISTIC LOAD_{RK}			
WS F _{Rk}	[kN]	1.15	1.15
DESIGN LOAD_{RD}			
WS F _{Rd}	[kN]	0.60	0.60
RECOMMENDED LOAD_{REC}			
WS F _{rec}	[kN]	0.43	0.43

Product commercial data

Product Code	Screw	Quantity [pcs]			Weight [kg]			Bar Codes
	Length [mm]	Box	Outer	Pallet	Box	Outer	Pallet	
WS-3525	25	1000.0	16000.0	384000.0	1.55	24.7	623.3	5906675302126
WS-3535	35	1000.0	12000.0	288000.0	1.81	21.7	551.3	5906675302225
WS-3545	45	500.0	6000.0	144000.0	1.24	14.9	386.8	5906675302324
WS-3595	9.5	1000.0	16000.0	512000.0	0.96	15.3	520.0	5906675303024
WS-3911	11	1000.0	16000.0	512000.0	1.08	17.3	583.0	5906675303123
WS-3595-OC	9.5	1000.0	16000.0	512000.0	1.06	17.0	574.7	5906675303727
WS-3911-OC	11	1000.0	16000.0	256000.0	1.07	17.2	304.7	5906675799643
WSK-3525	25	10.0	10.0	-	10.3	10.3	523.2	5906675193236
WSK-3535	35	10.0	10.0	-	10.3	10.3	649.3	5906675013480
WSK-3545	45	10.0	10.0	-	10.4	10.4	651.4	5906675013497
WSK-3595	9.5	10.0	10.0	-	10.3	10.3	959.9	5906675193205
WSK-3911	11	10.0	10.0	-	10.4	10.4	529.3	5906675193267