

# R-XTPIIHD

CARBON STEEL THROUGHBOLT ANCHOR WITH HOT DIP GALVANIZED COATING FOR UNCRACKED CONCRETE

A new generation of R-XTPIII band anchors - with reduced embedment depth.



## FEATURES AND BENEFITS

Can be used in categories C1 to C4

The new shape of the expansion clip with an additional forged shoulder ensures perfect engagement of the clip in concrete

Guarantee of maximum safety and best performance, confirmed by international approvals and tests by certified laboratories

Anchor length identification mark to identify embedment length/depth. Facilitates post-installation inspection

High performance in cracked concrete and uncracked C20/25-C50/60

Quick and comfortable assembly with the application SDS Punch Tool

Application specification in accordance with EAD 330232-01-0601-v01 included in ETA-23/0887

Standard and reduced anchorage depth

Reliable and simple installation thanks to the use of pass-through mounting

## SUBSTRATES



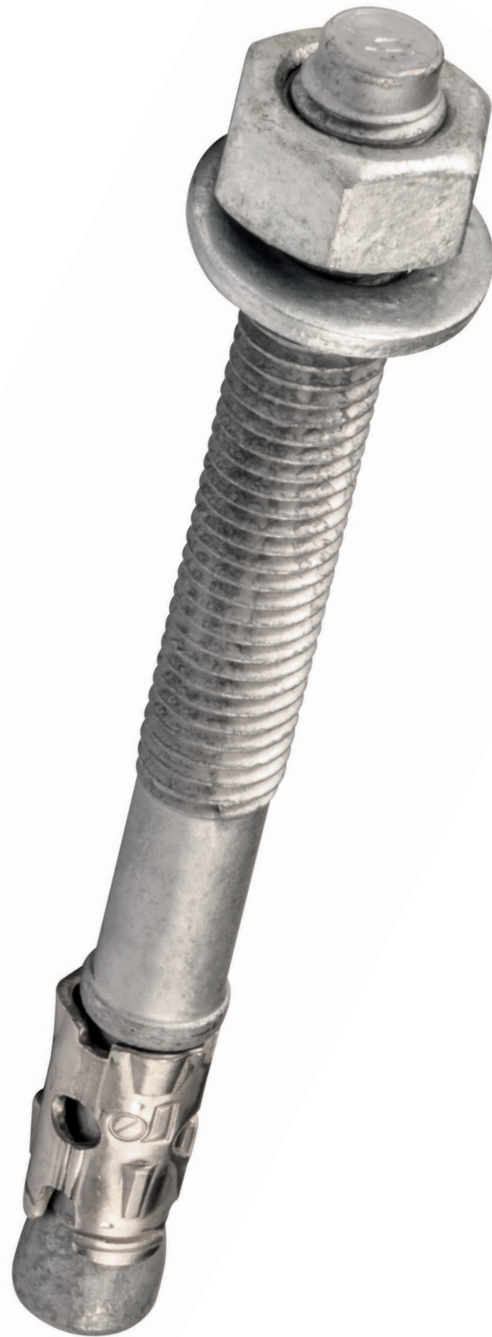
Uncracked concrete C20/25-C50/60



Unreinforced concrete, reinforced concrete



Natural stone (after site testing)



## R-XTPIIHD CAN BE USED OUTDOORS IN ACCORDANCE WITH EN ISO 10684

Corrosivity category	Corrosion	Durability
		Thickness in accordance with chapter 8.3 > 50um with average durability in years
C1	Very low	500*
C2	Short	75
C3	Mean	25
C4	High	12,5
C5	Very high	5
CX	Extreme	2

\* Working life of anchor not exceeding 50 years



The new R-XTPIIIHD anchor is characterised by standard and reduced embedment depth. High load capacities allow for shallower anchoring and fastening of thicker fastener elements.

## APPLICATIONS

Ventilated facades

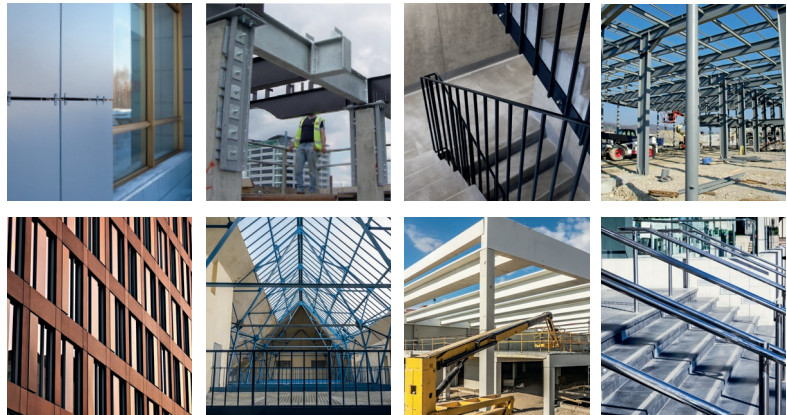
Barriers and railings

Steel structure

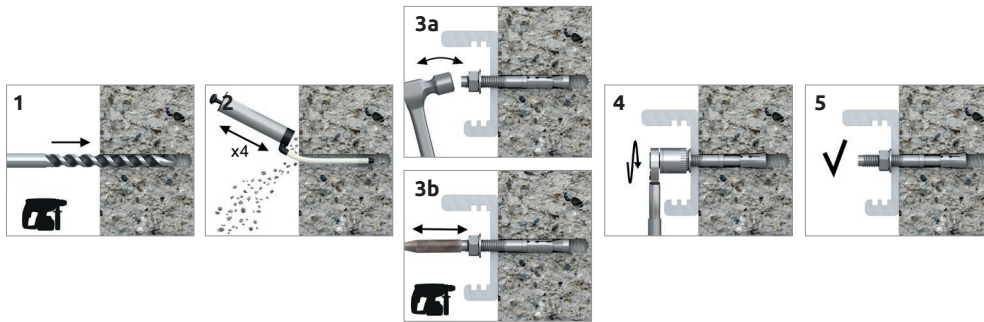
Curtain walling

Heavy equipment

Stadium seating



## INSTALLATION GUIDE



1. Drill the hole with rotary hammer drilling machine. Drill to a required depth.
2. Remove the drill cuttings and thoroughly clean the hole using the pump 4 times.
3. Insert the anchor into the hole through the fastened element and tap it with a hammer or punch tool to the appropriate depth.
4. Using a torque wrench, tighten the nut to the required torque.

## PRODUCT INFORMATION

Size	Code	Diameter		Length	Fastened element hole diameter		Maximum thickness fastened element	
		d	L	d <sub>f</sub>	t <sub>fix, red</sub>	t <sub>fix, std</sub>		
		[mm]	[mm]	[mm]	[mm]	[mm]		
M8	R-XPTIIHD08060/10	8	60	9	10	-		
	R-XPTIIHD08065/1		65		15	0		
	R-XPTIIHD08075/10		75		25	10		
	R-XPTIIHD08080/15		80		30	15		
	R-XPTIIHD08095/30		95		45	30		
	R-XPTIIHD08115/50		115		65	50		
M10	R-XPTIIHD08140/75	10	140	12	90	75		
	R-XPTIIHD10065/5		65		5	-		
	R-XPTIIHD10080/10		80		20	10		
	R-XPTIIHD10095/25		95		35	25		
	R-XPTIIHD10115/45		115		55	45		
	R-XPTIIHD10130/60		130		70	60		
M12	R-XPTIIHD10140/70	12	140	14	80	70		
	R-XPTIIHD12080/5		80		5	-		
	R-XPTIIHD12100/5		100		25	5		
	R-XPTIIHD12120/25		120		45	25		
	R-XPTIIHD12125/30		125		50	30		
	R-XPTIIHD12135/40		135		60	40		
	R-XPTIIHD12150/55		150		75	55		
	R-XPTIIHD12180/85		180		105	85		
M16	R-XPTIIHD12220/125	16	220	18	145	125		
	R-XPTIIHD16105/5		105		5	-		
	R-XPTIIHD16125/5		125		25	5		
	R-XPTIIHD16140/20		140		40	20		
	R-XPTIIHD16150/30		150		50	30		
	R-XPTIIHD16180/60		180		80	60		
R-XPTIIHD16220/100	220	100	80					








## INSTALLATION DATA

R-HPTIIHD			M8		M10		M12		M16	
Effective adchorage depth			Standard	Reduced	Standard	Reduced	Standard	Reduced	Standard	Reduced
Drill hole diameter	d <sub>0</sub>	[mm]	Ø8		Ø10		Ø12		Ø16	
Hole diameter in fixture	d <sub>f</sub>	[mm]	9,0		12,0		14,0		18,0	
Nominal embedment depth	h <sub>nom</sub> ≥	[mm]	55,0	40,0	60,0	50,0	80,0	60,0	100,0	80,0
Hole depth in substrate	h <sub>0</sub> ≥	[mm]	60,0	45,0	65,0	55,0	90,0	70,0	110,0	90,0
Installation torque moment	T <sub>inst</sub>	[Nm]	15,0		30,0		50,0		100,0	
Size wrench	SW		13		17		19		24	
Minimum thickness of concrete member	h <sub>min</sub> ≥	[mm]	100,0	100,0	100,0	100,0	136,0	100,0	170,0	130,0
Minimum spacing	s <sub>min</sub>	[mm]	60,0	35,0	65,0	50,0	100,0	70,0	120,0	90,0
Minimum edge distance	c <sub>min</sub>	[mm]	60,0	40,0	65,0	50,0	100,0	70,0	120,0	90,0
Effective embedment depth	h <sub>ef</sub>	[mm]	47,0	32,0	50,0	40,0	68,0	48,0	85,0	65,0
Characteristic resistance under tension load (steel failure)	N <sub>RK,s</sub>	[kN]	17,5		27,6		40,0		71,1	
Characteristic resistance under tension load (pull-out failure uncracked concrete)	N <sub>RK,p</sub>	[kN]	14,0	8,9	17,4	12,4	27,6	16,4	38,6	25,8
Characteristic resistance under shear load (steel failure)	V <sup>0</sup> <sub>RK,s</sub>	[kN]	10,9		17,4		20,4		42,0	

## PRODUCT COMMERCIAL DATA

Size	Code	Diameter		Length		Box weight unitary	Quantity	
		d		L			Box	Pallet
		[mm]		[mm]		[kg]	[szt]	[szt]
M8	R-XPTIIIHD08060/10	8		60		2,60	100	39200
	R-XPTIIIHD08065/1			65		2,8	100	39200
	R-XPTIIIHD08075/10			75		3,1	100	39200
	R-XPTIIIHD08080/15			80		3,2	100	39200
	R-XPTIIIHD08095/30			95		3,7	100	39200
	R-XPTIIIHD08115/50			115		4,3	100	39200
	R-XPTIIIHD08140/75			140		5,1	100	39200
M10	R-XPTIIIHD10065/5	10		65		2,3	50	19600
	R-XPTIIIHD10080/10			80		2,7	50	19600
	R-XPTIIIHD10095/25			95		3,1	50	19600
	R-XPTIIIHD10115/45			115		3,4	50	19600
	R-XPTIIIHD10130/60			130		3,8	50	19600
	R-XPTIIIHD10140/70			140		4,5	50	19600
	R-XPTIIIHD12080/5		12		80		4,5	50
R-XPTIIIHD12100/5		100			4,9	50	19600	
R-XPTIIIHD12120/25		120			5,4	50	19600	
R-XPTIIIHD12125/30		125			5,6	50	19600	
R-XPTIIIHD12135/40		135			5,9	50	19600	
R-XPTIIIHD12150/55		150			6,5	50	19600	
R-XPTIIIHD12180/85		180			7,4	50	19600	
R-XPTIIIHD12220125		220		8,9	50	19600		
M16	R-XPTIIIHD16105/5	M16		105		4,2	25	9800
	R-XPTIIIHD16125/5			125		5,1	25	9800
	R-XPTIIIHD16140/20			140		5,6	25	3200
	R-XPTIIIHD16150/30			150		5,9	25	9800
	R-XPTIIIHD16180/60			180		6,9	25	9800
	R-XPTIIIHD16220100			220		8,2	25	9800

## RELATED PRODUCT

DRILLING	POWER TOOLS	<p>Hammer drill SDS plus, 850 W <b>R-PRH26850</b></p> 	<p>Hammer drill 18V SDS plus 2,0J <b>R-PRH18</b></p> 	
	ACCESSORIES FOR POWER TOOLS	<p>Drill Aggressor SDS Plus <b>RT-SDSA</b></p> 	<p>Drill Rebar drill SDS Plus <b>RT-SDSR</b></p> 	<p>Impact sockets 1/2" <b>RT-IS</b></p> 
		<p>Torque wrench 20-100 Nm 1/2" <b>R-HTW-20-100</b></p> 	<p>Punch tool SDS plus <b>RT-SDSI-MA150</b></p> 	<p>Hammer <b>RT-HAM</b></p> 