

T-BL-2 Double rope pulley with nylon sheaves

Double rope pulley for hoisting up small loads and lightweight elements



Product information

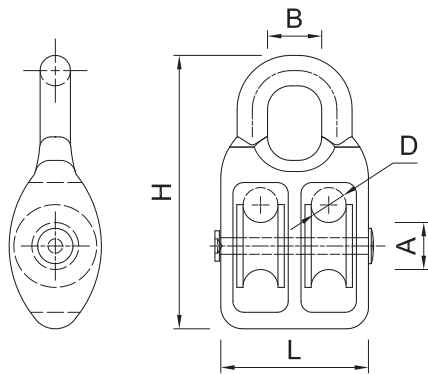
Features and benefits

- Great for hoisting up small loads and middleweight elements
- Made of low carbon steel
- Zinc electroplated for enhanced corrosion resistance
- Nylon sheave bearing for longer rope life
- Two easy rolling nylon sheaves with high static pressure resistance and line-shaped grooves
- Fixed eye design keeps rope secure and straight while at work

Applications

- Hoisting up small loads, theater curtains, awnings, banners, ads
- Tensioning of the balustrade systems
- Towing and raising of middleweight elements
- Small construction cranes

Product information



Product Code	Dimensions				
	D	H	L	A	B
	[mm]	[mm]	[mm]	[mm]	[mm]
T-BL-205	7	60	35	11	10
T-BL-208	8	80	42	18	13
T-BL-212	12	112	52	31	16

Basic performance data

Product Code	Load resistance	
	Maximum	
	[kg]	
T-BL-205	600.00	
T-BL-208	900.00	
T-BL-212	1200.00	

Product commercial data

Product Code	Dimensions					Quantity [pcs]			Weight [kg]			Bar Codes
	D [mm]	H [mm]	L [mm]	A [mm]	B [mm]	Box	Outer	Pallet	Box	Outer	Pallet	
T-BL-205	7	60	35	11	10	25	200	4000	0.71	5.7	143.6	5906675963075
T-BL-208	8	80	42	18	13	10	140	2800	1.17	16.4	358.2	5906675963174
T-BL-212	12	112	52	31	16	5	100	2000	1.46	29.1	612.4	5906675963273