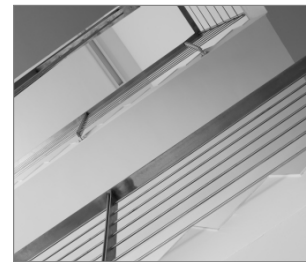


## R-STUDS Metric Threaded Rods - Steel Class 8.8, Hot Dip Galvanized

Threaded rod 8.8 grade steel, hot-dip galvanized (HDG) with increased corrosion resistance, for use with bonded anchors



### Product information

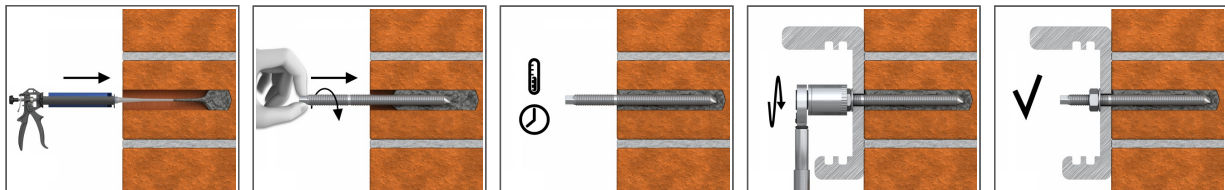
#### Features and benefits

- Threaded rod made of hot dip galvanized steel is suitable for outdoor use and in damp conditions
- Can be post-installed through fixture in some cases. (Consult technical advisory service)
- Hexagonal head for convenient use with torque wrench

#### Applications

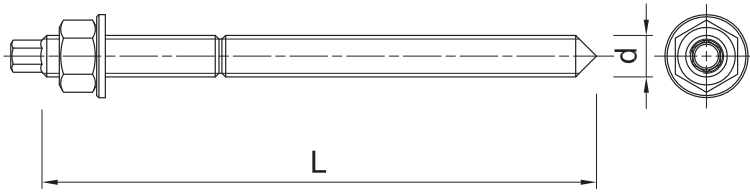
- Fastening with bonded anchors
- Balustrading & handrails
- Barriers
- Cable trays
- Consoles
- Curtain walling
- Formwork support systems
- Heavy machinery
- Lamps
- Safety barriers
- Road Signs
- Railings
- Public seating

### Installation guide



1. Drill hole to the required diameter and depth for stud size being used.
2. Clean the hole thoroughly with hand pump and hole brush
3. If required, insert the mesh sleeve into position
4. Fill hole with the required resin to the recommended fill level. (Follow the relevant instructions for the resin product)
5. Insert the threaded stud slowly and with a slight twisting motion, until the required embedment depth is reached
6. Leave undisturbed until curing time of resin has elapsed
7. Attach fixture and tighten the nut to the required installation torque

## Product information



Size	Product Code	Anchor		Fixture		
		Diameter	Length	Max. thickness $t_{fix}$ for:		Hole diameter
		d	L	$h_{nom, 6d}$	$h_{nom, 12d}$	$d_f$
		[mm]	[mm]	[mm]	[mm]	[mm]
M8	R-STUDS-08110-88HD	8	110	52	4	9
M10	R-STUDS-10170-88HD	10	170	98	38	12
	R-STUDS-10190-88HD	10	190	118	58	12
M12	R-STUDS-10130-88HD	10	130	58	-	12
	R-STUDS-12160-88HD	12	160	73	1	14
M16	R-STUDS-12220-88HD	12	220	133	61	14
	R-STUDS-12260-88HD	12	260	173	101	14
M20	R-STUDS-16150-88HD	16	150	35	-	18
	R-STUDS-16240-88HD	16	240	125	29	18
	R-STUDS-16300-88HD	16	300	185	89	18
	R-STUDS-16190-88HD	16	190	75	-	18
M24	R-STUDS-20235-88HD	20	235	92	-	22
	R-STUDS-20260-88HD	20	260	117	-	22
	R-STUDS-20300-88HD	20	300	157	37	22
M30	R-STUDS-24300-88HD	24	300	128	-	26
M30	R-STUDS-30380-88HD	30	380	166	-	32

## Product commercial data

Size	Product Code	Anchor		Quantity [pcs]			Weight [kg]			Bar Codes
		Diameter [mm]	Length [mm]	Box	Outer	Pallet	Box	Outer	Pallet	
M8	R-STUDS-08110-88HD	8	110	10	10	9350	0.70	0.70	684.5	5906675388649
M10	R-STUDS-10170-88HD	10	170	10	10		1.09	1.09		5906675473376
	R-STUDS-10190-88HD	10	190	10	10		1.10	1.10		5906675473383
	R-STUDS-10130-88HD	10	130	10	10	9350	1.40	1.40	1339.0	5906675153759
M12	R-STUDS-12160-88HD	12	160	10	10	5040	2.0	2.0	1038.0	5906675153773
	R-STUDS-12220-88HD	12	220	10	10	2560	1.74	1.74	475.4	5906675429014
	R-STUDS-12260-88HD	12	260	10	10	1920	0.50	0.50	126.0	5906675091808
M16	R-STUDS-16150-88HD	16	150	10	10	2560	2.3	2.3	618.8	5906675429038
	R-STUDS-16240-88HD	16	240	10	10	2000	20.0	20.0	4030.0	5906675446677
	R-STUDS-16300-88HD	16	300	5	5	960	2.2	2.2	442.8	5906675429045
	R-STUDS-16190-88HD	16	190	10	10	2560	2.9	2.9	775.5	5906675085579
M20	R-STUDS-20235-88HD	20	235	10	10		4.0	4.0		5906675466798
	R-STUDS-20260-88HD	20	260	5	5	960	3.0	3.0	606.0	5906675153810
	R-STUDS-20300-88HD	20	300	10	10		6.8	6.8		5906675471518

## Product commercial data

Size	Product Code	Anchor		Quantity [pcs]			Weight [kg]			Bar Codes
		Diameter [mm]	Length [mm]	Box	Outer	Pallet	Box	Outer	Pallet	
M24	R-STUDS-24300-88 HD	24	300	2	2	1000	2.0	2.0	1024.0	5906675429052
M30	R-STUDS-30380-88 HD	30	380	2	2	500	4.0	4.0	1039.0	5906675429069