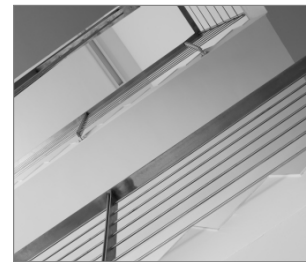


## R-STUDS Metric Threaded Rods - Steel Class 8.8, Hot Dip Galvanized, Flat Head

Threaded rod 8.8 grade steel, hot-dip galvanized (HDG) with increased corrosion resistance, for use with bonded anchors



### Product information

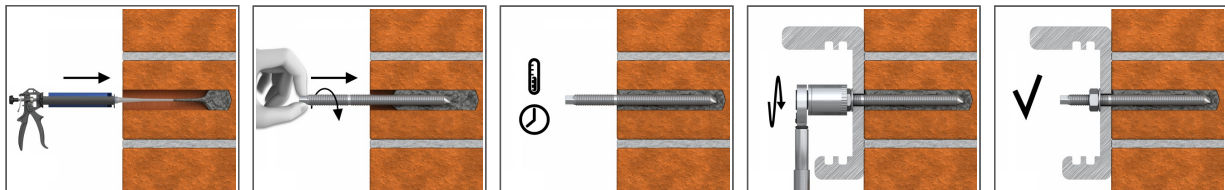
#### Features and benefits

- Threaded rod made of hot dip galvanized steel is suitable for outdoor use and in damp conditions
- Can be post-installed through fixture in some cases. (Consult technical advisory service)

#### Applications

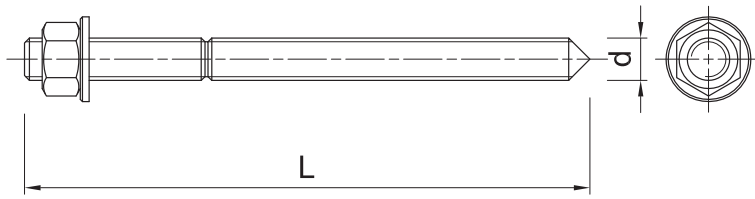
- Fastening with bonded anchors
- Balustrading & handrails
- Barriers
- Cable trays
- Consoles
- Curtain walling
- Formwork support systems
- Heavy machinery
- Lamps
- Safety barriers
- Road Signs
- Railings
- Public seating

### Installation guide



1. Drill hole to the required diameter and depth for stud size being used.
2. Clean the hole thoroughly with hand pump and hole brush
3. If required, insert the mesh sleeve into position
4. Fill hole with the required resin to the recommended fill level. (Follow the relevant instructions for the resin product)
5. Insert the threaded stud slowly and with a slight twisting motion, until the required embedment depth is reached
6. Leave undisturbed until curing time of resin has elapsed
7. Attach fixture and tighten the nut to the required installation torque

**Product information**



Size	Product Code	Anchor		Fixture		
		Diameter	Length	Max. thickness $t_{fix}$ for:		Hole diameter
		d	L	$h_{nom, 6d}$	$h_{nom, 12d}$	$d_f$
		[mm]	[mm]	[mm]	[mm]	[mm]
M12	R-STUDS-1235088HDF	12	350	263	191	14
M16	R-STUDS-1621088HDF	16	210	95	-	18
	R-STUDS-1622088HDF	16	220	105	9	18
	R-STUDS-1626088HDF	16	260	145	49	18
	R-STUDS-1640088HDF	16	400	285	189	18
M20	R-STUDS-2026088HDF	20	260	117	-	22
	R-STUDS-2030088HDF	20	300	157	37	22
	R-STUDS-2032088HDF	20	320	177	57	22

**Product commercial data**

Size	Product Code	Anchor		Quantity [pcs]			Weight [kg]			Bar Codes
		Diameter [mm]	Length [mm]	Box	Outer	Pallet	Box	Outer	Pallet	
M12	R-STUDS-1235088HDF	12	350	1	1		0.40	0.40		5906675430232
M16	R-STUDS-1621088HDF	16	210	10	10		3.1	3.1		5906675476209
	R-STUDS-1622088HDF	16	220	10	10	4200	3.4	3.4	1458.0	5906675486550
	R-STUDS-1626088HDF	16	260	10	10	2500	3.8	3.8	982.5	5906675484846
	R-STUDS-1640088HDF	16	400	1	1		0.60	0.60		5906675430218
M20	R-STUDS-2026088HDF	20	260	10	10	1170	6.0	6.0	729.7	5906675489230
	R-STUDS-2030088HDF	20	300	10	10	880	6.9	6.9	634.6	5906675489247
	R-STUDS-2032088HDF	20	320	10	10	500	3.6	3.6	210.5	5906675476308