

## KES-MW Mineral wool cap

Post-installed mineral wool cap reduces heat transmission and results in a homogenous insulation surface



### Product information

#### Features and benefits

- Post-installed cap reduces heat transmission at fixing points
- Results in homogeneous and smooth insulation surface
- Cost-saving solution, as countersunk installation allows selection of shorter fixings.
- Quick and easy application
- [English]: Współczynnik przewodzenia ciepła <math><0,040 \text{ W}/(\text{m}\times\text{K})</math>

#### Applications

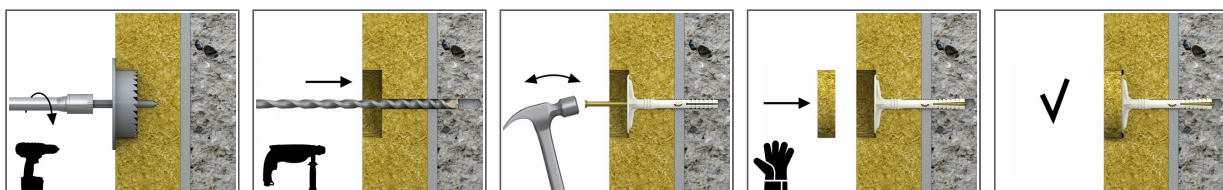
- Mineral wool (MW) boards

#### Base materials

##### Suitable for use in

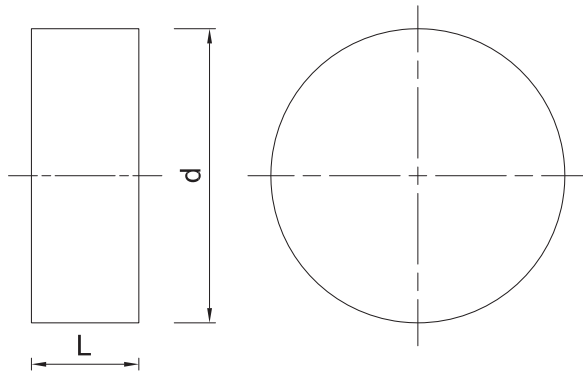
- Mineral Wool Boards

### Installation guide



1. Cut the hole in polystyrene with KFS tool.
2. Insert cap into countersunk hole in polystyrene following installation of the facade fixing

**Product information**



Product Code	Material	Diameter	High
		d	L
		[mm]	
KES-63/20-MW	mineral wool	63	20
KES-90/20-MW	mineral wool	90	20

**Product commercial data**

Product Code	Diameter [mm]	High [mm]	Quantity [pcs]			Weight [kg]			Bar Codes
			Box	Outer	Pallet	Box	Outer	Pallet	
KES-63/20-MW	63	20	250	250	8000	1.93	1.93	91.6	5906675422893
KES-90/20-MW	90	20	500	500	4000	8.0	8.0	93.6	5906675471563