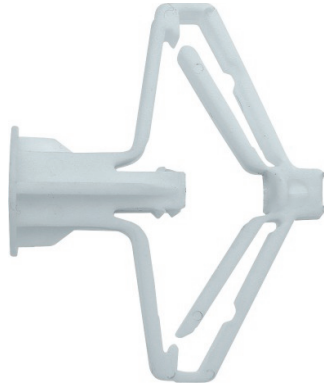


G Plastic Toggle

Plastic toggle, medium duty plasterboard fixing



Product information

Features and benefits

- Available in combination with countersunk screw or angle hook.
- Medium duty plasterboard fixing
- Quick and easy installation for household applications
- Fixing body made of impact resistant co-polymer of polypropylene

Applications

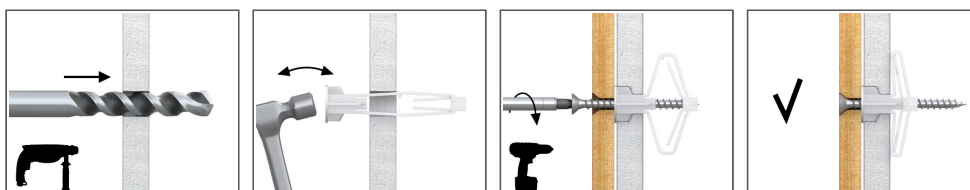
- Shelves and bathroom accessories on standard plasterboard
- Pictures
- Towel rails
- Light shelving
- Brackets, grips and hooks
- Lamps

Base materials

Suitable for use in

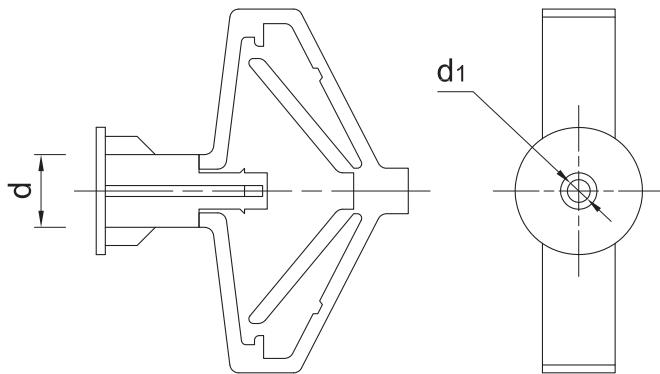
- Plasterboard
- Chipboard
- Oriented Strand Board
- Plywood

Installation guide



1. Drill a hole of the required diameter.
2. Compress the 'wings' and insert the fixing into the hole. Tap in lightly until flush.
3. Insert screw through the fixture into the fixing. Tighten until secure.

Product information



Product Code	Diameter	
	Screw	
	d	D
[mm]		
08G	8	3.5
10G	10	4

Installation data

Size			Ø8	Ø10
Hole diameter in substrate	d_0	[mm]	8	10
Min. substrate thickness	h_{min}	[mm]	12.5	9.5
Hole diameter in fixture	d_f	[mm]	4	5

Product commercial data

Product Code	Diameter [mm]	Quantity [pcs]			Weight [kg]			Bar Codes
		Box	Outer	Pallet	Box	Outer	Pallet	
08G	8	100	1600	38400	0.16	2.5	90.0	5906675193724
10G	10	100	1200	28800	0.25	3.0	102.0	5906675194622